



WHIRLPOOL AUSTRALASIA

CONSUMER SERVICES

SERVICE MANUAL

**FRONT LOAD
WASHING MACHINE**

**Model AWM6100
Version 8570 610 53000**

Copyright © 2001 Whirlpool (Australia) Pty. Limited

**All rights strictly reserved. Reproduction or issue to third parties in any form whatsoever is not permitted without written authority of Whirlpool (Australia) Pty. Limited
Whirlpool is a registered trademark of Whirlpool U.S.A.**

This documentation is intended only for qualified technicians who possess the required qualifications and are aware of the regulatory requirements applicable to servicing electrical appliances.

BLANK PAGE

CONTENTS

	Page
TECHNICAL DATA	4 - 5
EXPLODED VIEW - CABINET	6
EXPLODED VIEW - DRUM	7
SPARE PARTS LIST	8 - 10
WIRING DIAGRAM	11
CIRCUIT DIAGRAM	12
PROGRAM DIAGRAM - Cotton	13
PROGRAM DIAGRAM - Synthetic	14
PROGRAM DIAGRAM - Delicate	15
PROGRAM DIAGRAM - Wool and Silk	16
PROGRAM DIAGRAM - Spinning Profiles	17
FAULT DIAGNOSIS	18
TEST SEQUENCE	19
FAILURE DURING NORMAL OPERATION	20
FAULT CODES	20
ADJUSTING DISTRIBUTION NOZZLE	21
TIMER CONNECTIONS	22

TECHNICAL DATA**Dimensions**

Height	845	mm
Width	595	mm
Depth	620	mm

Weight

Nett	73	kg
------	----	----

Mains Connection

Voltage	230 - 240	V
Frequency	50	Hz
Power consumption	2.3	kW

Drum

Volume	53	l
--------	----	---

Capacity of dry laundry

Cotton/coloured	6	kg
Cotton rapid	3	kg
Cotton short	6	kg
Easy care	2.5	kg
Easy care rapid	1.5	kg
Easy care short	2.5	kg
Delicate	1.5	kg
Wool	1	kg

Water Level (as sensed by the pressure switch)

Level 1		
Switching point	60± 5	mmWc
Reset point	35± 5	mmWc
Overflow	280 ± 20	mmWc

Water (level visible inside the drum)

Level 1		
Switching point	25 - 39	mm
Overflow	267 - 306	mm

Nominal currents

Contacts		
11 - 12	4 (4)	A
11 - 14	16 (4)	A
11 - 16	1 (1)	A

Door lock

Lock time (20 °C)	3 - 6	s
Unlock time	60 - 90	s
Voltage	230 - 240	V
Rated current:		
Contact 4 - 5	16 (4)	A

Heating element

Heating Tubular heating element with NTC - sensor

Rated Voltage	230 - 240	V
Rated power	2050	W
Resistance	22 - 28	Ω

Resistance NTC :

0°C	35.9	kΩ
30°C	9.8	kΩ
40°C	6.6	kΩ
50°C	4.6	kΩ
60°C	3.2	kΩ
70°C	2.3	kΩ
95°C	1.1	kΩ

Inlet valve - Cold/hot fill :

Water temp (max)	60	°C
Rated flow <100 kPa	4	l/min
Pressure range	50 - 1000	kPa
Nominal voltage	220 - 240	V
Frequency	50	Hz
Minimum starting voltage:		
< 600 kPa	160	V
600 - 1000 kPa	170	V
Nominal current	35	mA
Nominal input	6	VA
Nominal (20 °C)	3.4 - 4.5	kΩ

Drain pump (synchronous)

Nominal Voltage	230 - 240	V
Nominal current	0,3	A
Nominal power	34	W
Frequency	50	Hz
Resistor (coil)	155 ± 7%	Ω
Motor protection	170	°C
Capacity(H=1,25m)	14 ± 2	l/min

TECHNICAL DATA (Cont.)

Program timer

Type SC1
 Timer basic 4619 712 52201
 Timer programmed 4619 744 80302
 Nominal voltage 230 - .240 V
 Frequency 50 Hz

Harness Connectors (See circuit diagram)

OA4.1 - OA4.2 5. Option
 OA4.3 - OA4.4 6. Option
 OB4.1 - OB4.2 3. Option
 OB4.3 - OB4.4 4. Option
 OC4.1 - OC4.2 1. Option
 OC4.3 - OC4.4 2. Option
 SLT3.1 - SLT3.3 Temp.selector
 SLS4.1 - SLS4.4 Spin speed selector
 VCF3.1 - VCF3.3 Valve (cold water)
 VHF3.1 - VHF3.3 Valve (hot water)
 Pi5.1 = negative supply
 Pi5.2 = data
 Pi5.3 = clock
 Pi5.4 = positive supply
 Pi 5.5 = negative supply
 PL3.1 - PL3.3 Pilot lamp

Connector

M7.1 - M7.7 Motor
 DP2.1 - DP2.2 Pump
 SET2.1 - SET2.2 NTC
 DSS3.1 - DSS3.3 Door switch
 PR2.1 - PR2.2 Pressostat

Single connector

HE2.1 - HE2.2 Heating element
 PS2.1 - PS2.2 Pressostat
 SM3.2 - SM3.3 Mains switch (3 fold connector)

Program 32 positions

Step	Cotton / Colour	Easy care	Delicate	Wool	Silk
Pre wash	02-06	03-06	04-06	-	-
Main wash	07-21	12-21	14-21	17-21	18-21
Rinse	22-28	22-28	22-28	22-28	22-28
Spin	29-31	29-31	29-31	29-31	29-31
Stop	32	32	32	32	32

Speeds

Wash speed 54 rpm
 Ramp speed 95 rpm
 Spin speed 1200 rpm

Ambient Temperatures

Ambient temperature up to 70 °C
 Storage temperature up to 85 °C

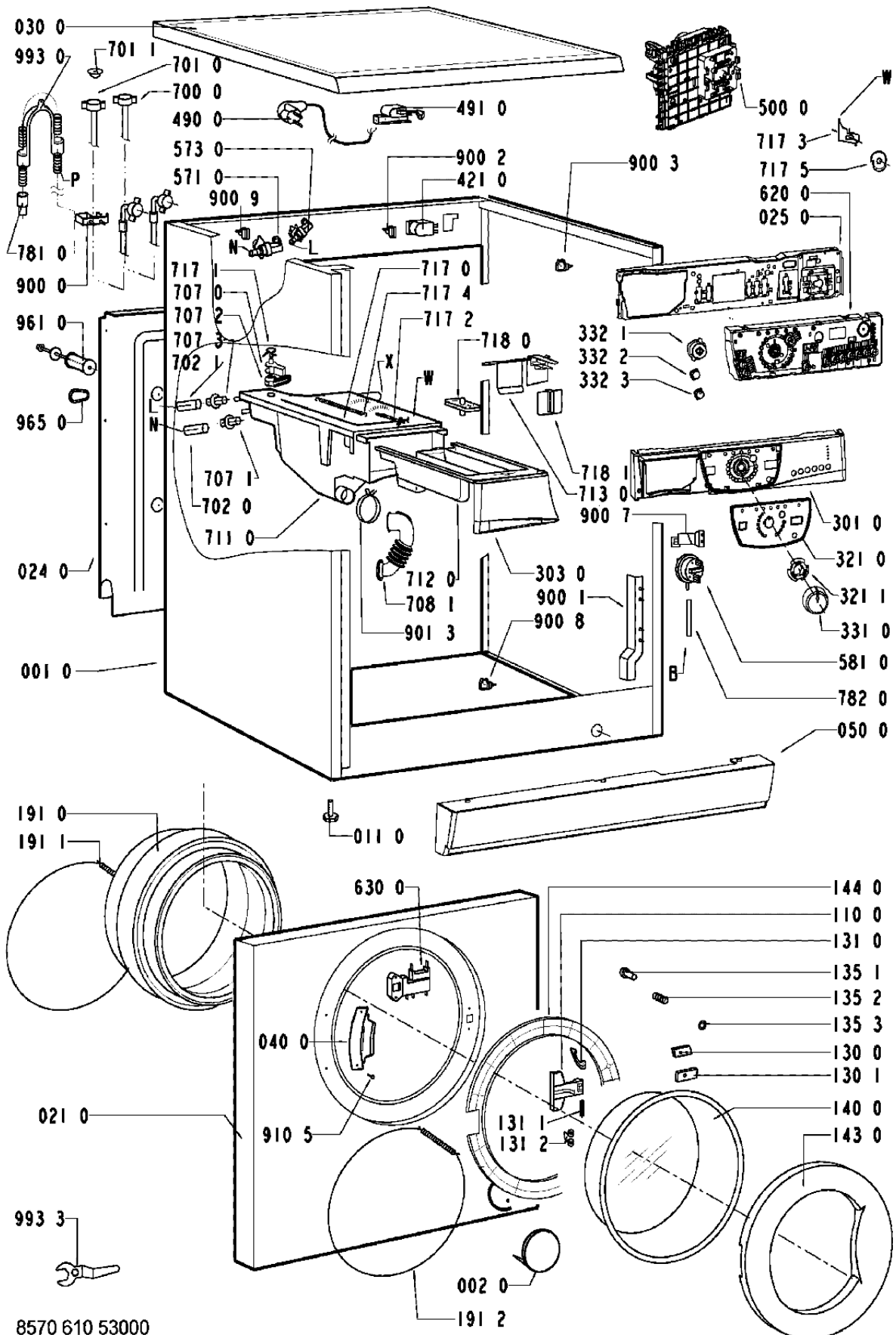
Output

Motor M7.6 - DSS 3.2 >40 V
 in pump step AQ2.1 -DSS 3.2 240 V
 NTC not measurable
 Pump DP2.1 -DP2.2 240 V
 Doorlock DSS3.1 -DSS 3.3 240 V
 Pressostat E4 - E2 240 V
 - empty PR2.1 - E2 240 V
 - full PR2.2 - E2 240 V
 Valve (Rast 2,5) V2.1 - V2.2 >170 V
 Options not measurable
 Display module Pi5.1 - Pi5. 5 V
 Pi5.4 - Pi5.5 12 V

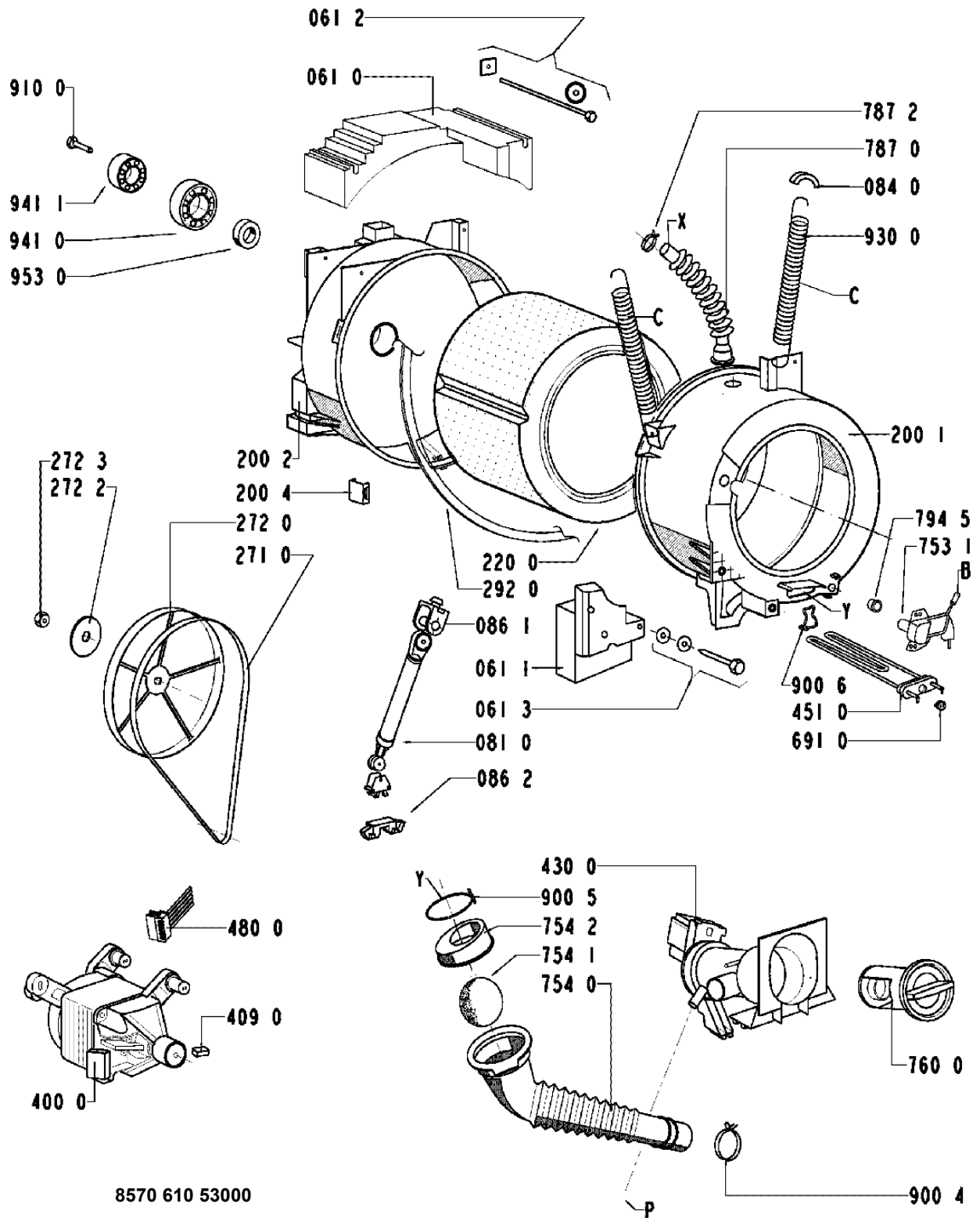
Motor

Type MCA52/64 - 148 t.f.
 WHE 0
 Belt ratio i = 1 : 15.9
 Resistance contacts
 6 - 7 68.7± 7% Ω
 4 - 5 2.15± 7% Ω
 2 - 3 1.89± 7% Ω
 1 - 3 0.84± 7% Ω

EXPLODED VIEW - CABINET



EXPLODED VIEW - DRUM



8570 610 53000

PARTS LIST

Item	Part No	Description
001 0	4819 440 19716	Cabinet
002 0	4812 440 19343	Flap
011 0	4819 462 48472	Foot
021 0	4812 440 19818	Front
024 0	4812 440 18998	Panel, rear
025 0	4812 404 38551	Support control board VBL WH
030 0	4812 310 18586	Table top VBL WH
040 0	4812 417 18787	Hinge
050 0	4812 440 10406	Pedestal VBL, 53 l
061 0	4812 466 88458	Counter weight upper
061 1	4812 466 88459	Counter weight front
061 2	4819 310 39227	Mounting kit Weight top
061 3	4819 310 39228	Mounting kit Weight bottom
081 0	4812 529 18038	Shock absorber until 1200
084 0	4812 466 58001	Anti rattle, support spring
086 2	4812 401 18412	Stopper
110 0	4812 498 18139	Handle, door white
130 0	4812 417 28047	Plate Door lock
130 1	4812 417 28048	Plate, Doorlock, Lower
131 0	4812 417 28046	Lock Door
131 1	4812 417 28045	Pin Door Lock
131 2	4812 492 58022	Spring Door Lock
135 1	4812 498 18137	Knob Door safety
135 2	4812 491 48004	Spring
135 3	4812 290 68153	Holder, adjust. Door safety switch
140 0	4812 450 68219	Door glass
143 0	4812 440 19782	Glass door frame VBL WH
144 0	4812 440 19589	Frame, door glass DE-WT
191 0	4812 460 68527	Door bellow standard
191 0	4812 460 68532	Door bellow WH grease resistance
191 1	4812 492 18017	Strap
191 2	4819 530 58059	Ring
200 1	4812 418 18283	Tub 53l front
200 2	4812 418 18318	Tub rear
200 4	4812 290 88054	Clamp for tub WH
220 0	4812 418 18281	Drum 53l, 1000
271 0	4812 358 18056	V-ribbed belt WH 1250 J5
272 0	4812 528 58027	Pulley DIAM. 298
272 2	4812 532 18024	Washer
272 3	4812 505 18371	Nut M 12
292 0	4812 530 58101	Gasket Tub
301 0	4812 452 10744	Control panel
303 0	4812 498 78114	Handle
321 0	4812 452 10745	Insert panel
321 1	4812 532 98011	Fastener, Inlay

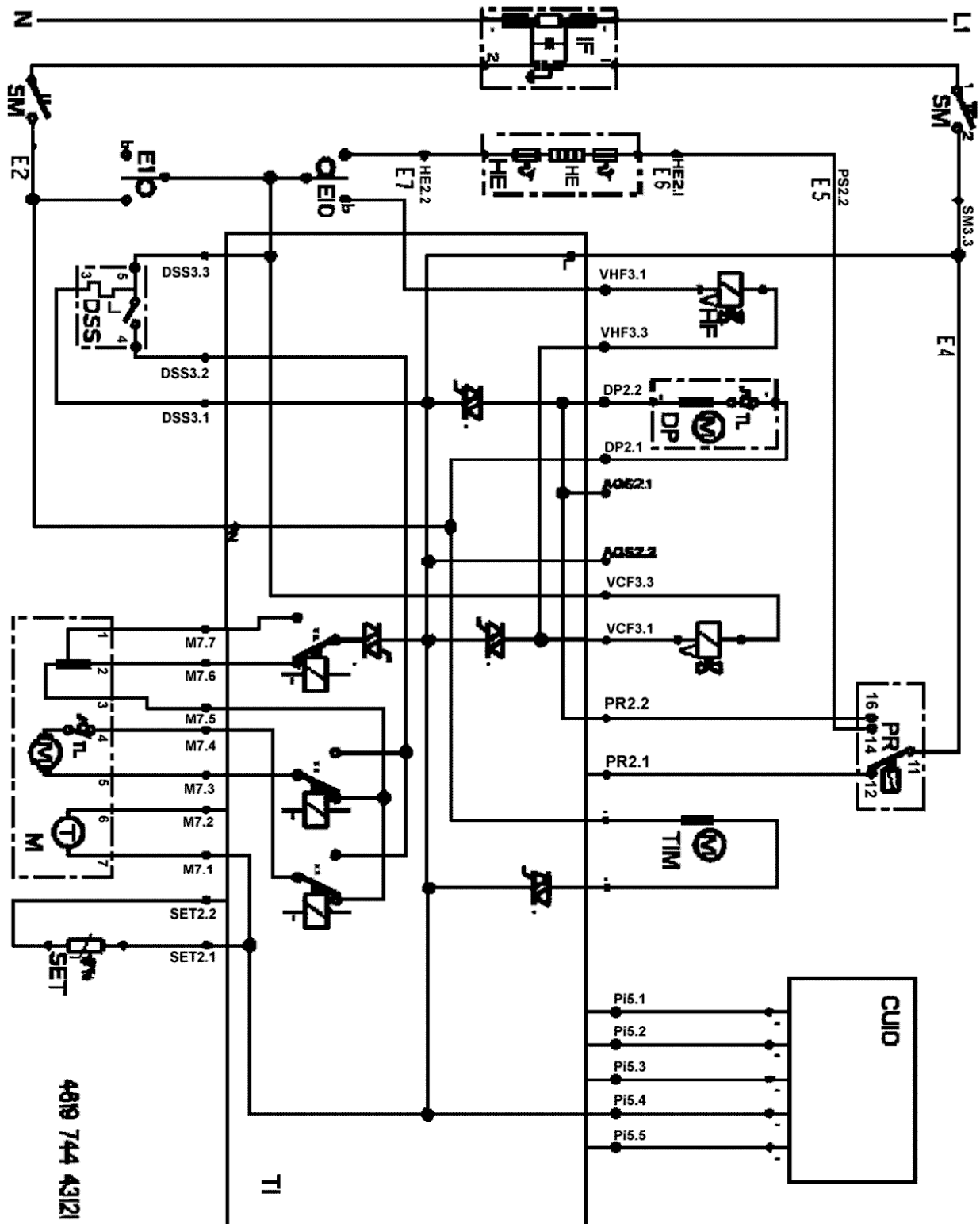
PARTS LIST (Cont.)

Item	Part No	Description
331 0	4812 414 58111	Knob, timer VBL complete
332 1	4812 513 18097	Push button, start VBL WH
332 2	4812 513 18098	Push button, spin speed VBL WH
332 3	4812 513 18099	Push button option VBL WH
400 0	4812 361 18301	Motor 800/1000 MCA 52
409 0	4812 362 48004	Brush, carbon motor CESET
421 0	4812 121 18142	Interference filter 1,00 µF
430 0	4812 310 38525	Pump, drain with thermal protection
451 0	4812 259 28766	Heating element 240V, 53l
490 0	4812 310 18404	Kit cable, mains 5m 3x1,5
491 0	4812 321 28367	Strain relief
500 0	4812 282 18788	Timer SC1 (EI,PW,IR,RH)
571 0	4812 281 28382	Valve, magnet cold
573 0	4812 271 28449	Valve, magnet hot
581 0	4812 271 28441	Pressostat
620 0	4812 452 10374	Module Timer B S/DS
630 0	4812 280 58026	Door lock 3 TABS
691 0	4812 282 18702	Sensor NTC (SC1)
700 0	4812 530 28869	Hose, inlet hot
701 0	4819 530 28848	Hose, inlet
701 1	4819 466 69704	Gasket and filter
702 0	4819 530 29019	Hose internal
702 1	4819 530 28971	Hose, inlet internal
707 0	4812 526 48031	Nozzle Distribution
707 1	4812 526 48028	Nozzle
707 2	4812 526 48029	Nozzle
707 3	4812 526 48035	Nozzle hot
708 1	4812 530 48143	Bend
711 0	4812 418 88054	Detergent disp. 3C, 53l
712 0	4812 418 68198	Drawer 3 Compartment VBL
713 0	4812 418 88019	Flap Detergent Container
717 0	4812 418 78925	Bowden cable
717 1	4812 321 38013	Lever, Nozzle
717 2	4812 321 38012	Holder, adjustable
717 3	4812 278 88017	Slide
717 4	4812 492 38359	Spring, Nozzle
717 5	4812 282 18807	Cam for 3 Compartment drawer, SC1/VBL/WH
718 0	4812 526 48051	Siphon
718 1	4812 418 88018	Accessory
753 1	4819 418 68234	Chamber, air
754 0	4812 530 28826	Drain hose
754 1	4812 530 28832	Lock eco
754 2	4812 530 28829	Flange eco
760 0	4812 480 58105	Filter set pump
781 0	4819 530 28847	Drain hose

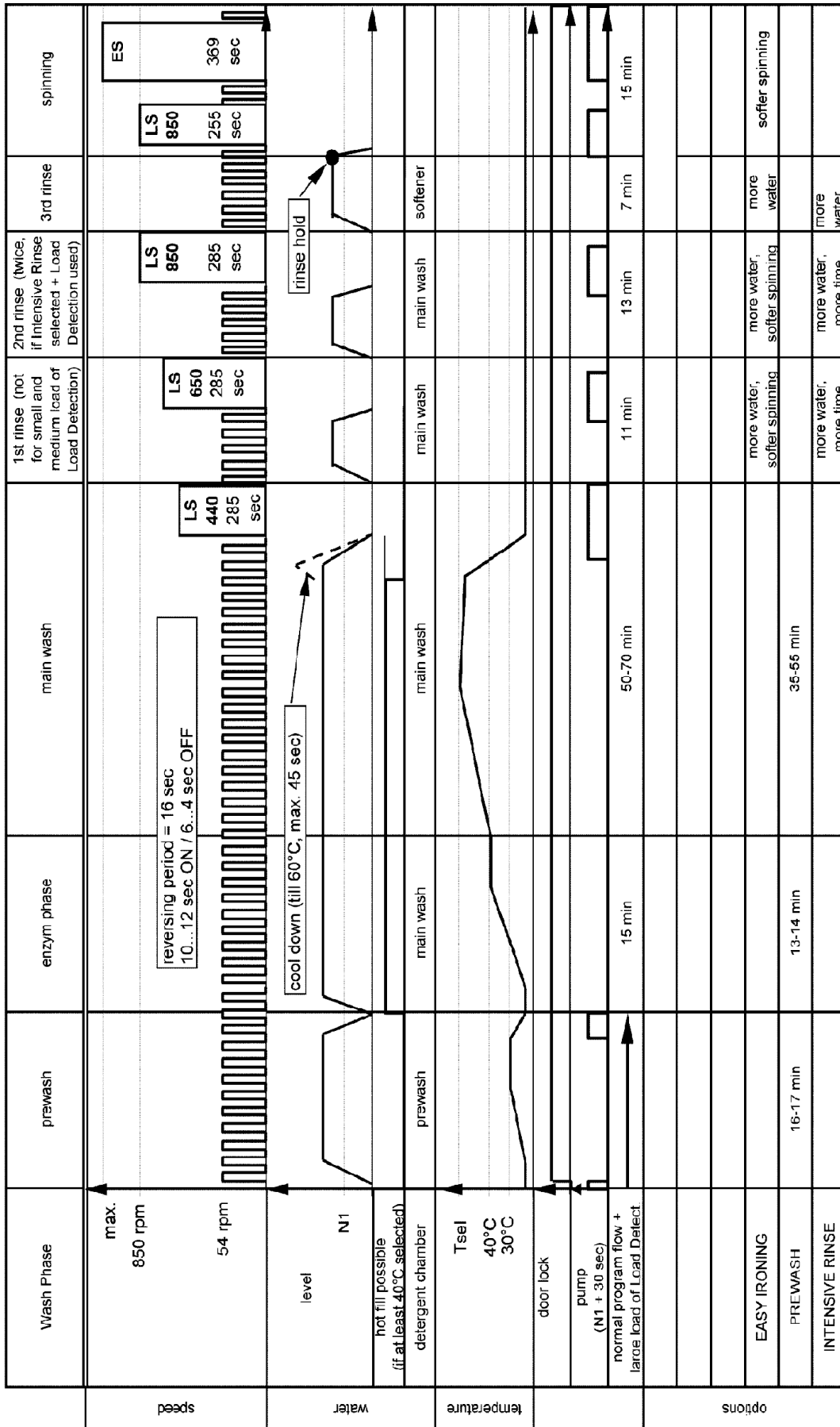
PARTS LIST (Cont.)

Item	Part No	Description
782 0	4812 530 28827	Hose, pressostat
787 0	4812 530 28813	Steam hose
787 2	4819 401 18868	Clamp, hose 26,8 mm
794 5	4812 530 58095	Gasket, air trap
900 0	4812 255 18204	Holder, hose outlet
900 1	4812 290 88049	Bracket
900 2	4812 290 88077	Cable, clamp
900 3	4812 401 18446	Cable, clamp
900 4	4819 401 18872	Clamp, hose
900 5	4819 401 18529	Clamp, hose
900 6	4812 401 18444	Support, heating element
900 7	4812 256 98031	Holder, pressostat
900 8	4819 401 18823	Clamp
900 9	4819 404 78449	Support
901 3	4812 401 18414	Clamp, hose
910 0	4812 502 18383	Screw, Torx T40 M 8X 25
910 5	4812 502 18516	Screw 4,2 x 13
930 0	4819 492 38139	Spring, Suspension
941 0	4812 520 28004	Bearing, ball 6206
941 1	4812 520 28066	Bearing, ball 6204
953 0	4812 530 58099	Shaft seal 1200
961 0	4819 532 68829	Spacer
965 0	4812 466 68545	Cover BK/WH
993 0	4819 530 29028	Bow
993 3	4812 395 58004	Tool

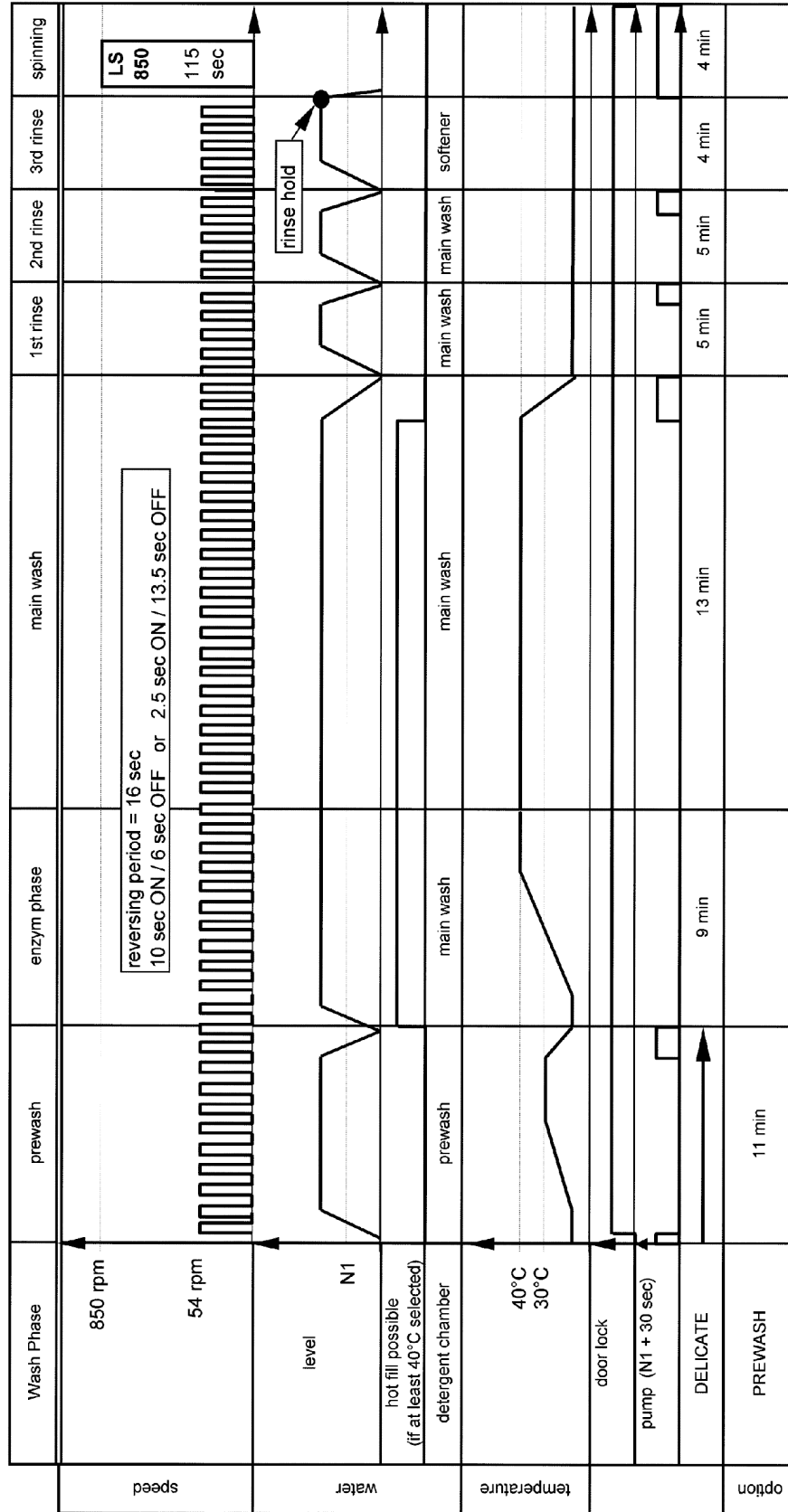
CIRCUIT DIAGRAM



PROGRAM DIAGRAM - Cotton



PROGRAM DIAGRAM - Delicate



FAULT DIAGNOSIS

1. The diagnostic tests must be performed on the machine without a wash load because the out of balance detection system is disabled.
2. Set the cycle selector to "DRAIN"
3. Press :
 - a) "RINSE HOLD" button twice
 - b) "INTENSIVE RINSE" button twice
 - c) "START" button once,
4. The control panel will now display :
 - 1000 speed LED on (Does not change for duration of the test sequence).
 - "PREWASH" programme sequence LED on
 - "WASH" programme sequence LED on
 - "RINSE" programme sequence LED on
 - "RINSE HOLD" programme sequence LED on
 - "DRAIN/SPIN" programme sequence LED on - (This is Step 1 in the Table over)
5. Drain pump runs for approximately six seconds and the test sequence automatically advances to Step 2.
6. By pressing the Prewash button once, the timer advances to step 3

TEST SEQUENCE

Step	Advance to step by pressing : (See Note 1)	Pump Out or Fill Via :	Temperature	Time	Drum Rhythm	Component(s) Checked	LED *				
							P	W	R	RH	D
1	<i>Start</i>	Pump out	-	-	Stationary	Rinse hold and Intensive rinse buttons	●	●	●	●	●
2	<i>Advances automatically</i>	Prewash	Cold fill, no heat	60 s (fill)	Stationary	Prewash button and prewash fill	●	●	●	●	●
3	<i>Prewash button</i>	Main wash	Warm fill, no heat	60 s (fill)	Stationary	Main wash fill	○	●	●	●	●
4	<i>Easy iron button</i>	Main wash	Warm fill, heat to 90°C	60 s (fill) 25 min heat	10 s on, 6 s off	Heating circuit, NTC, leakage	○	●	●	●	●
5	<i>Auto (or press rinse hold button) (Note 2)</i>	Main wash	Cold fill, no heat	55 s (fill)	80 s on, 2 s off	Easy ironing button	○	○	●	●	●
6	<i>Rinse hold button</i>	Fill via fabric softener	Cold fill, no heat	60 s	80s on, 2s off	Fabric softener fill	○	○	●	●	●
7	<i>Rinse hold button</i>	Pump out	-	-	10s on, 6s off	Pump	○	○	○	●	●
8	<i>Advances automatically (Note 3)</i>	Pump out	-	6 min	Spin Max speed	Pump, spin	○	○	○	○	●

*Programme Sequence LED's: P = Prewash W = Wash R = Rinse RH = Rinse Hold D = Drain

Note 1 Unless indicated by "Advances automatically", the test cycle can only be advanced by pressing the appropriate button once within five minutes, otherwise the machine will pump out and a false fault will be indicated.

Note 2. This part of the test sequence can be terminated after the fill by pressing the "Rinse hold" button but the NTC will not be checked for accuracy.

Note 3. This part of the test sequence can be terminated at any time by changing the cycle on the cycle selector then reselecting drain and press the start button. Once the machine is empty of water, the start button may be pressed and held until the start button light goes off to reset the timer ready for the next wash.

If a failure is detected during the test sequence the timer will :

1. Initiate the safety step routine :
 - A. Drain pump runs until pressure switch resets plus 30 seconds.
 - I. Main motor is turned off.
 - II. Water inlet valves are turned off.
 - III. Element is turned off
2. Stop the machine and illuminate the speed indicator LED's in a pattern to indicate the fault code.

FAILURE DURING NORMAL OPERATION

If a failure is detected during normal operation, the machine will stop, the programme sequence LED where the failure occurred will flash and the speed indicator LED's will illuminate in a pattern to indicate the fault code.

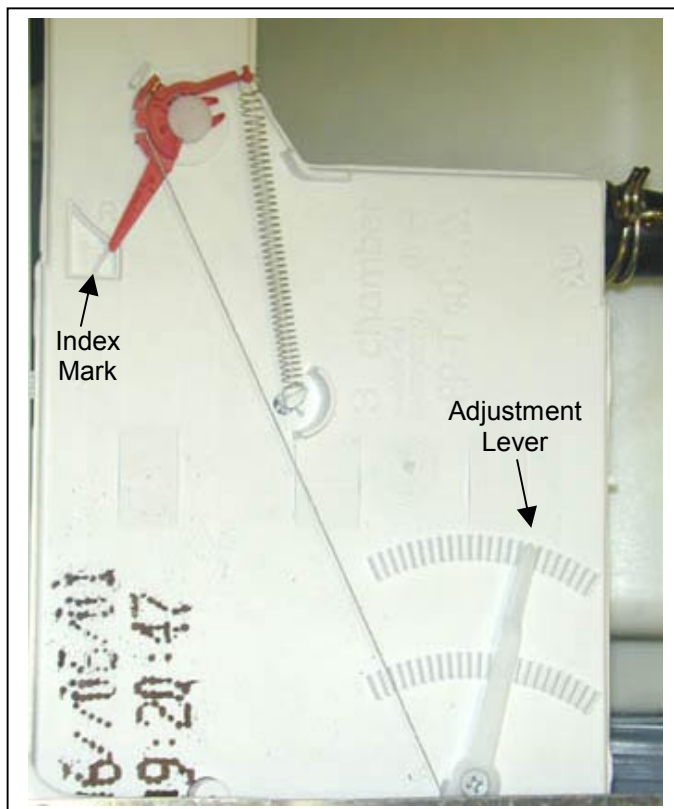
FAULT CODES

Failure	1	3	5	6	7	9	11	14	16	18	20	21
Speed	○	○	○	○	○	○	○	○	●	●	●	●
LED's	○	○	○	○	○	●	●	●	○	○	○	○
	○	○	●	●	●	○	○	●	○	○	●	●
	○	●	○	●	●	○	●	●	○	●	○	○
	●	●	●	○	●	●	●	○	○	○	○	●

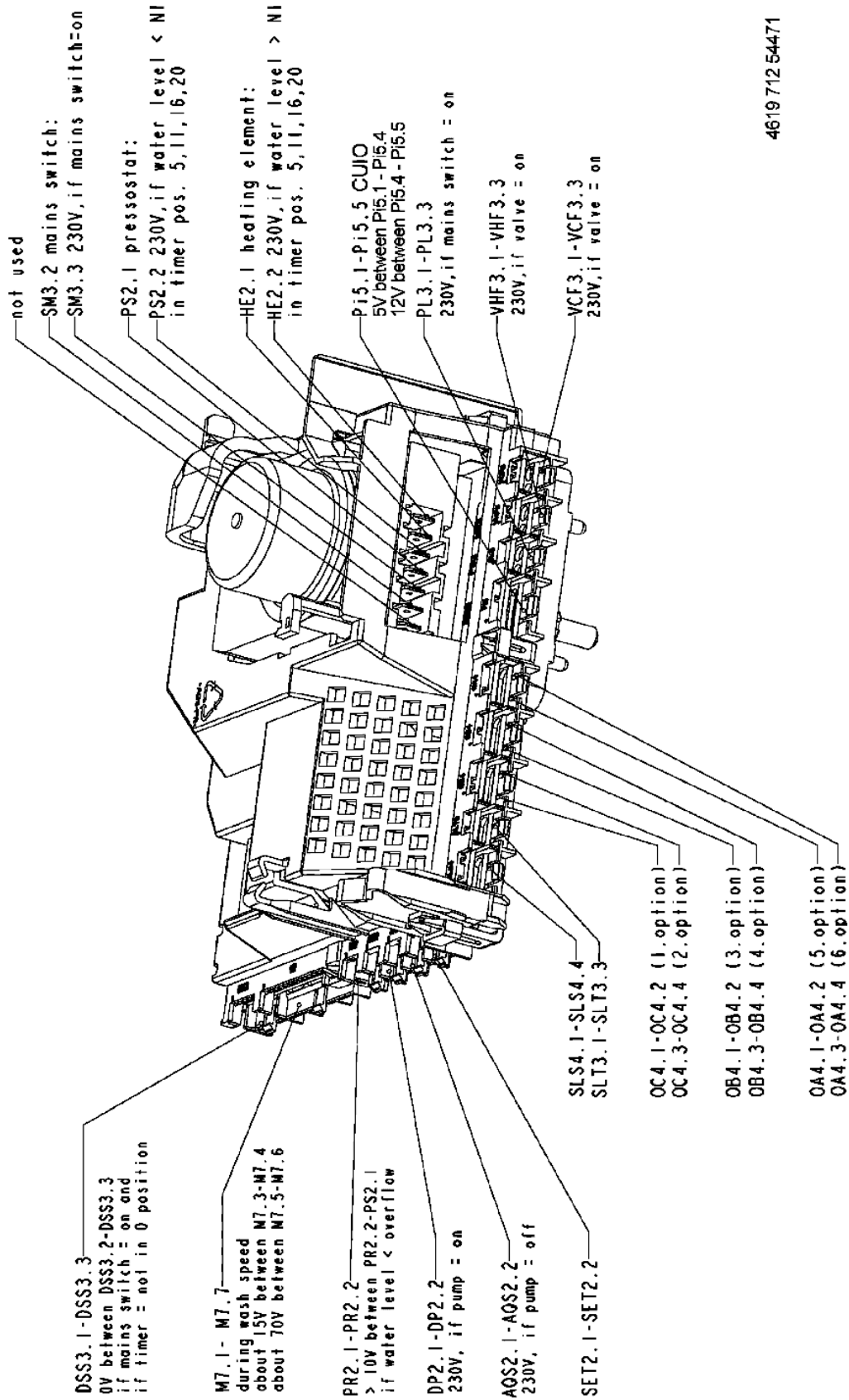
Fault	Detected Malfunction	Perform the following:
1	Water not entering or not detected	Check tap, cold inlet valve, pressure switch
3	Drain failure or not detecting empty drum	Check pressure switch, blocked drain, drain pump
5	NTC failure	Check NTC
6	Tachometer failure (no motor movement detected)	Check motor
7	Circuit board failure (motor triac)	Replace timer
9	Drain failure	Check drain pump, pressure switch, blocked drain
11	Electronic failure	Replace timer
14	Electronic failure	Replace timer
16	Control failure	Replace timer
18	Control failure	Replace timer
20	Control failure	Replace timer
21	Control failure	Replace timer

ADJUSTING DISTRIBUTION NOZZLE

1. Select any COTTON wash cycle with the prewash off and wait until water begins to enter machine.
2. Turn the machine off at the power point.
3. Remove the machine lid.
4. Adjust the lever until the red pointer is over the index mark.
5. Replace the machine lid, turn on the power, open the detergent drawer slightly and make sure that water is only entering the main wash (middle) compartment and that no water is entering the fabric softener compartment.



TIMER CONNECTIONS



4619712 54471