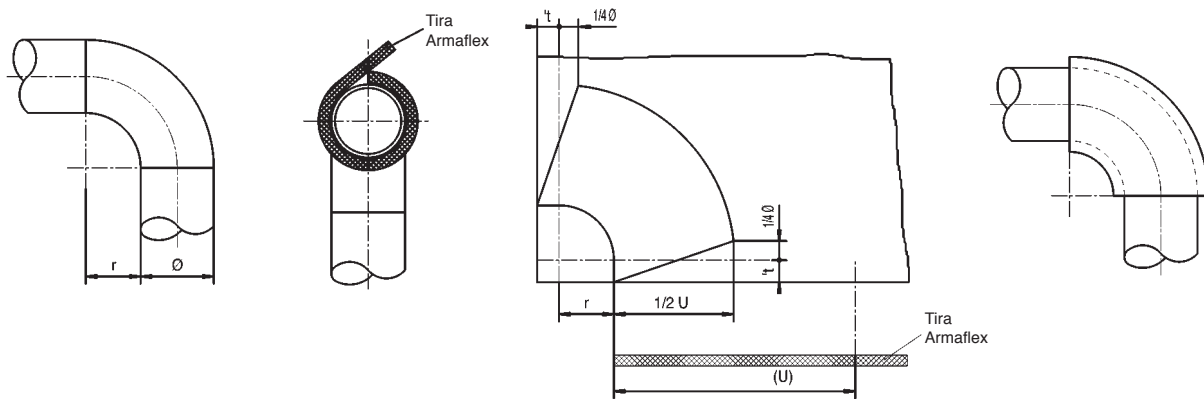


Preparação de prancha Armatflex

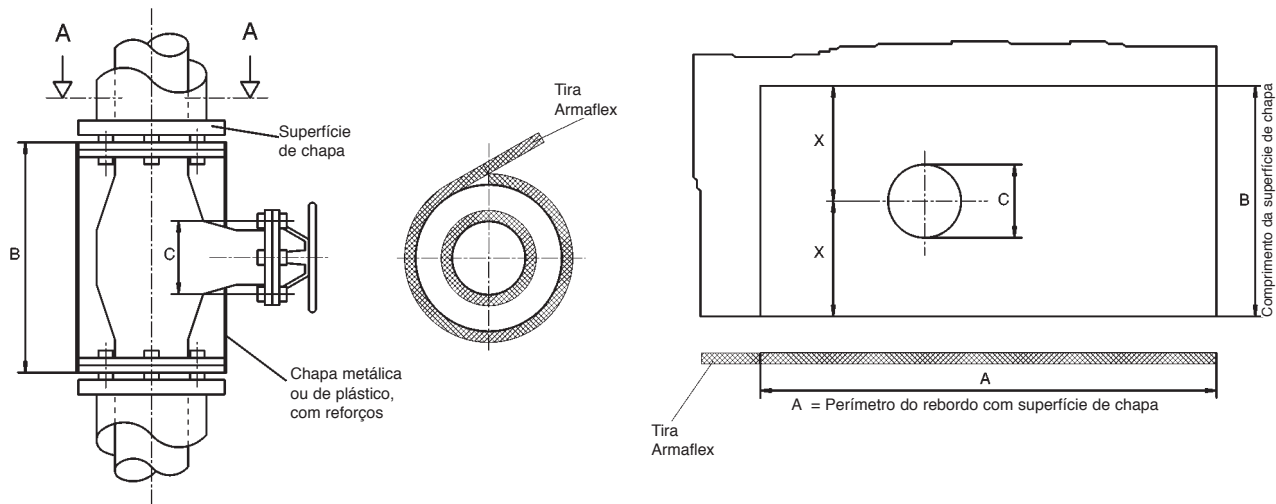
- Isolamento de curvas
- Isolamento do corpo da válvula
- Isolamento do fuso
- Válvulas de assento, inclinadas
- Falsas esquadrias
- Reduções
- Redução para um lado
- Isolamento de superfícies planas
- Isolamento para condutas de ar
- Isolamento de depósitos
- Isolamento de bombas

Isolamento de curvas com prancha Armaflex

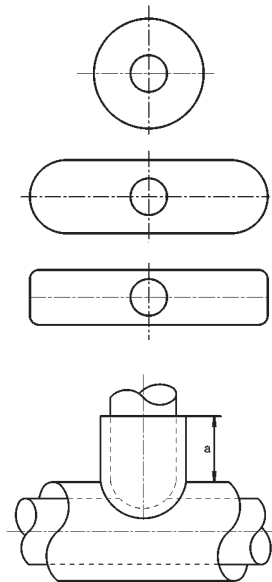
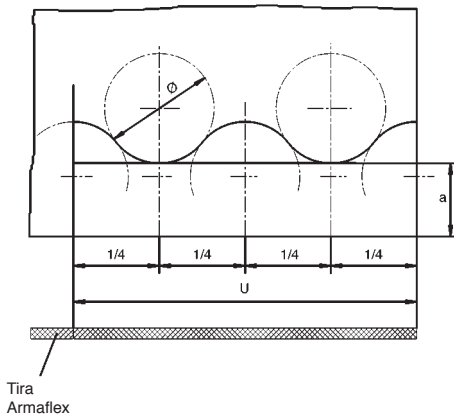
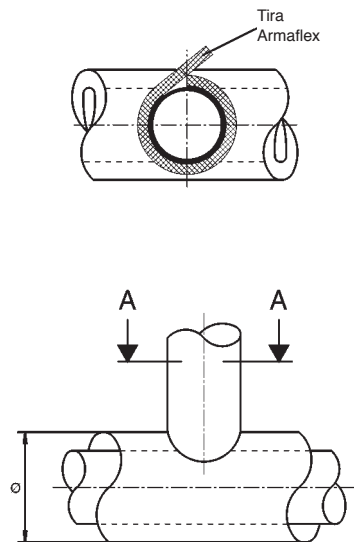


	D	F	H	K	M	R	T	V
t	6mm	10mm	13mm	16mm	19mm	25mm	32mm	50mm

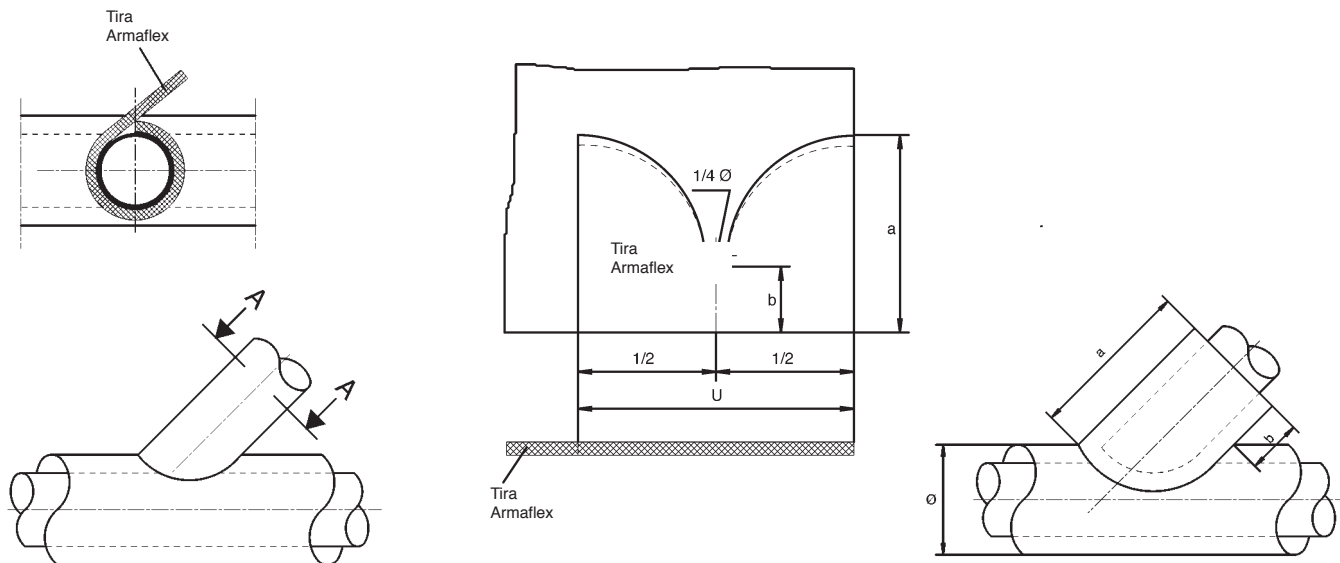
Isolamento da corpo da válvula com prancha Armaflex



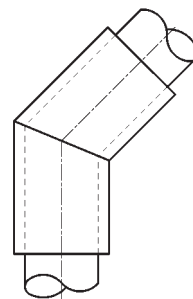
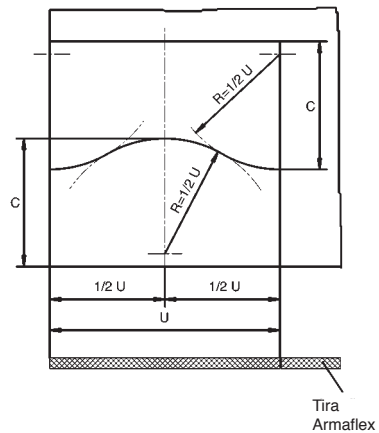
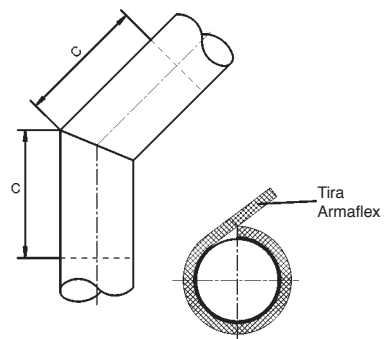
Isolamento do fuso com prancha Armaflex



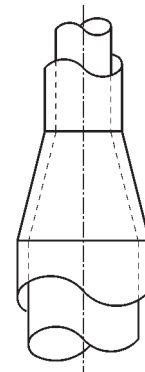
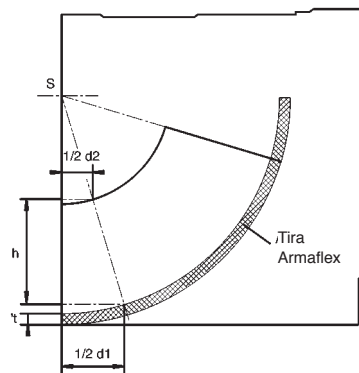
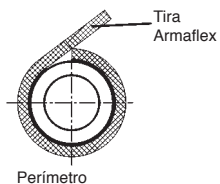
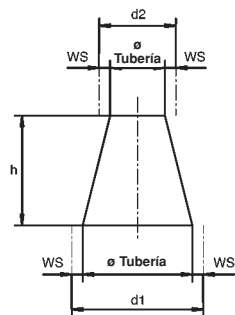
Válvulas de assento, inclinadas, com prancha Armatflex



Falsas esquadrias com prancha Armaflex

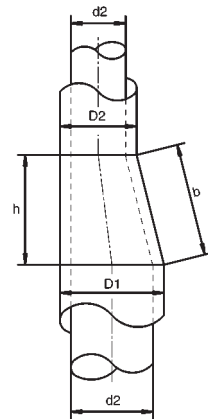
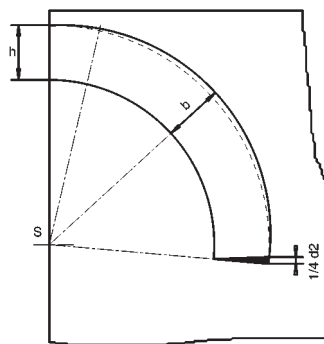
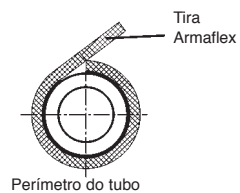
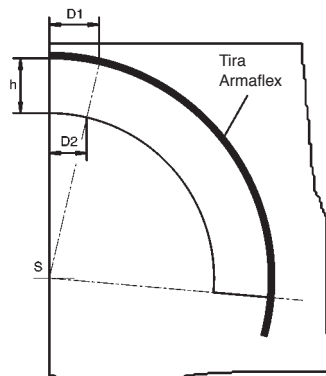


Reduções com prancha Armatflex



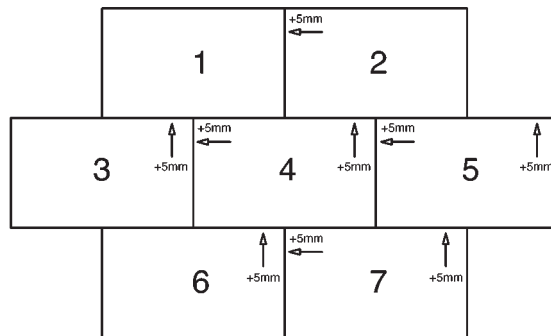
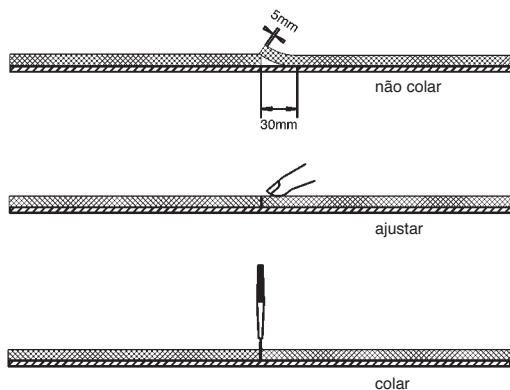
	D	F	H	K	M	R	T	V
t	6mm	10mm	13mm	16mm	19mm	25mm	32mm	50mm

Redução para um lado com prancha Armaflex

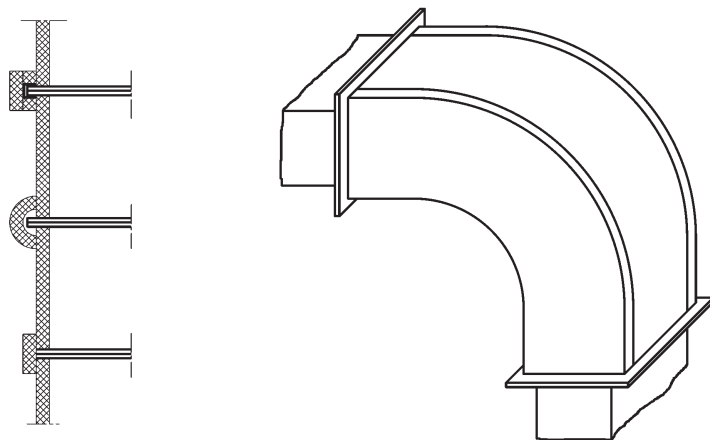


	D	F	H	K	M	R	T	V
t	6mm	10mm	13mm	16mm	19mm	25mm	32mm	50mm

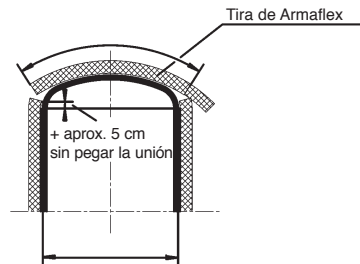
Isolamento de superfícies planas com prancha Armatflex



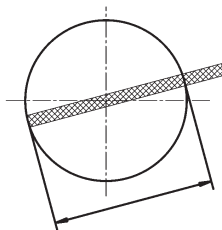
Isolamento para condutas de ar com prancha Armaflex



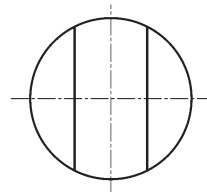
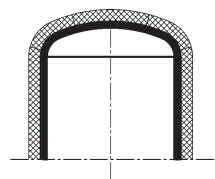
Isolamento de depósitos com prancha Armaflex



* Para depósitos de ϕ máx. 1,5 m
Tira de Armaflex = ϕ depósito



Pegar toda la superficie



- Medir o diâmetro do depósito com uma tira de Armaflex, com espessura correspondente à que vai empregar-se. Incluir a espessura do isolamento da parte cilíndrica.
- Quando se tratar de grandes diâmetros, usar pranchas Armaflex em rolos. Traçar um arco sobre a prancha com o raio correspondente à parte superior do depósito.
- Agora, aplicar uma camada fina de Cola Armaflex 520 sobre a face áspera da prancha Armaflex.
- Proceder de igual modo com a parte superior do depósito.
- Colocar a prancha Armaflex, centrada, sobre a parte superior do depósito.
- Comprimi-la desde o centro até à borda. Para evitar desvios, devem colar-se, sucessivamente, lados opostos.

Isolamento de bombas com prancha Armaflex

