



Service Manual

Dishwasher ADP262WH

Model Version		Page
	ADP262WH	
	8511 262 15513	
	Technical data	2 - 3
	Spare part list	4 - 5
	Exploded view	6 - 8
	Wiring diagram	9
	Circuit diagram	10
	Program diagram	11
	Text/Legend	12
	Family	TO Standard Range

Technical data

Dimension

Height	85.0	cm + 1.5
Width	59.8	cm
Depth	57.0	cm
Weight	51.7	kg

Succession of programs

Programs	see program diagram
Succession	1 - 2 - 3 - 4 - 5 - 6

Datas Energy Label

Energy Performance	C
Cleaning Performance	C
Drying Performance	C
Reference program	Bio/ Normal 50*

Specification/ PI-Expression

Program Daily 65°C		
Water consumption	16	l
Energy consumption	1.64	kWh
Program duration	~ 100	min
Program Eco 50°C		
Water consumption	20	l
Energy consumption	1.44	kWh
Program duration	~ 100	min
Noise level		
- without door insulation	~ 57	dB (A)
Detergent		
Separate contained		
- chamber I	15 - 25	ml
- chamber II	5	ml
Water connection	~ 25	°C
Water connection up to	60	°C
Capacity	12	stand. place settings

Volume

Water		
Basic/working level	4.4	l
Safety level	12.0	l
Overflow-level	13.5	l
Rinse aid		
Clear rinse max.	150	cm ³
Minimum for indication off	90	cm ³
6 Dossier steps	1 - 6	cm ³ ± 0.5
Salt container	2	kg

Flow Rates / Inlet Volumes

Spray pump	70	l / min
Drain pump	18	l / min
Height of drain hose max.	1.0	m
Height of drain hose min.	0.4	m
Length of drain hose max.	3.7	m
Length of drain hose min.	1.4	m
Water inlet electrovalve	2.5	lpm ± 2.5%

Water Pressure

Inlet pressure	0.3 - 10	bar
Spray pump pressure	0.32	bar

Rotations

Spray pump - motor	2800	RPM
Drainpump - Motor	3000	RPM
Spray arm lower	40	RPM ± 5
Spray arm upper	25	RPM ± 5

Electrical Data

Base level		
Voltage	240	V
Frequency	50	Hz
Total power	2.6	kW
Fuses	16	A

Timer

Model	Bitron Series 5000
PCB Type	B
Basic step time	7.5 s
2 Normal times	30/150 s

Technical data

Heating

1 Element system

Type	Flow through
Voltage	220 - 240 V
Power consumption (at 220 V)	2 kW
Resistance	25.0 Ω
Security	98 °C
Thermo fuse	206 °C

Motor

Spray pump - motor

Voltage	240 V
Power consumption	160 W
HI	76.5 Ω
HA	46 Ω
Capacitor	5 μ F

Drainpump - motor

Voltage	240 V
Power consumption	30 W
Resistance	168 Ω

Timer motor

Voltage	220 - 240 V
Resistance	9.5 kΩ

Control card (PCB)

Model	Karel B
Inputs	NTC/ Flow meter/ Switches/ Timer codes
Output	Timer motor

Valves

Inlet valve

Voltage	220/ 240 V
Power consumption	6 W
Resistance	3850 Ω

Regeneration valve

Voltage	220/ 240 V
Power consumption	6 W
Resistance	3750 Ω

Regeneration level - Water Levels P/S

Switching point	110 ± 10 mm w.c.
Reset point	40 ± 7.5 mm w.c.
Voltage	5 V

NTC

Type	ELTH 279.0015
Temperatures	40/ 50/ 55/ 65 °C

Flow Meter

Pulse	400 pulse/lt ± 5
-------	------------------

Regeneration and Volumes

Volume	320 cm ³
Steps	4
Water hardness	< 30° dh
	< 5.0 mmol/l
Salt consumption by 21° dh max. (Water hardness setting 3)	50 g

Water hardness category	Position of selector	German degrees °dH	French degrees °fH
1	1	0 - 6	0 - 11
2	2	7 - 13	12 - 23
3	3	14 - 20	24 - 36
4	4	21 - 35	37 - 63

Spare part list

Model ADP262WH
Service No. 851126215513
Version 851126215513

Pos. No.	12NC Code	Description
001 1	4812 404 48659	Bracket foot left
001 2	4812 404 48661	Bracket foot right
001 3	4812 404 48729	Bracket foot
004 0	4812 440 10498	Drip tray assy
011 0	4812 505 18374	Foot short, adjustable
022 0	4812 440 19575	Side panel left
022 1	4812 440 19576	Side panel right
024 0	4812 440 19991	Panel, rear
030 0	4812 440 19992	Table top
040 1	4812 417 18836	Hinge right
040 2	4812 417 18835	Hinge left
040 3	4812 417 18949	Protector f. Door
044 0	4812 492 38375	Spring
047 0	4812 404 48734	Hinge pulley
047 1	4812 404 48735	Brake Door
047 2	4812 404 68032	Hook left
047 3	4812 404 68033	Hook right
050 0	4812 440 88957	Plinth (Whirlpool) PS
053 0	4812 440 19573	Plinth
061 0	4812 466 88484	Counter weight
103 0	4812 440 19993	Door,outer
120 0	4812 440 19565	Door,inner
120 1	4812 440 19933	Batten
123 0	4812 466 48069	Insulation Door
130 0	4812 417 58375	Tilt lock
131 0	4812 401 18453	Hook lock
191 0	4812 466 68589	Gasket, door frame
192 0	4812 466 68641	Gasket, door lower
200 0	4812 418 18229	Container
241 0	4812 458 19024	Basket Upper
241 1	4812 458 19017	Cup holder
241 3	4812 528 88081	Wheel,basket upper
241 4	4812 458 18964	Basket upper
242 0	4812 458 18963	Basket lower
242 1	4812 528 88079	Wheel,basket lower
243 0	4812 458 18966	Cutlery cpl.
243 2	4812 404 48731	Grip cutlery basket
261 0	4812 462 38075	Rail telescope, inner
261 1	4812 462 79745	Cap rail
261 2	4812 462 79746	Cap rail ahead
301 0	4812 453 70931	Control panel ADP 26
303 0	4812 460 58361	Grip
331 0	4812 413 59047	Knob
332 0	4812 410 28722	Push button cap on/off
332 1	4812 410 28723	Push button cap funktion
351 1	4812 381 28057	Lamp green
400 0	4812 361 58179	Spray pump
400 1	4812 846 78001	Cap fixation
400 2	4812 401 18489	Bracket Motor
400 3	4812 401 18491	Damper circulation pump
400 4	4812 401 48577	Bracket Motor group
420 0	4812 121 18194	Capacitor
421 0	4812 121 18215	Interf.filter
430 0	4812 360 18522	Pump,draining
432 0	4812 360 18521	Pump,draining

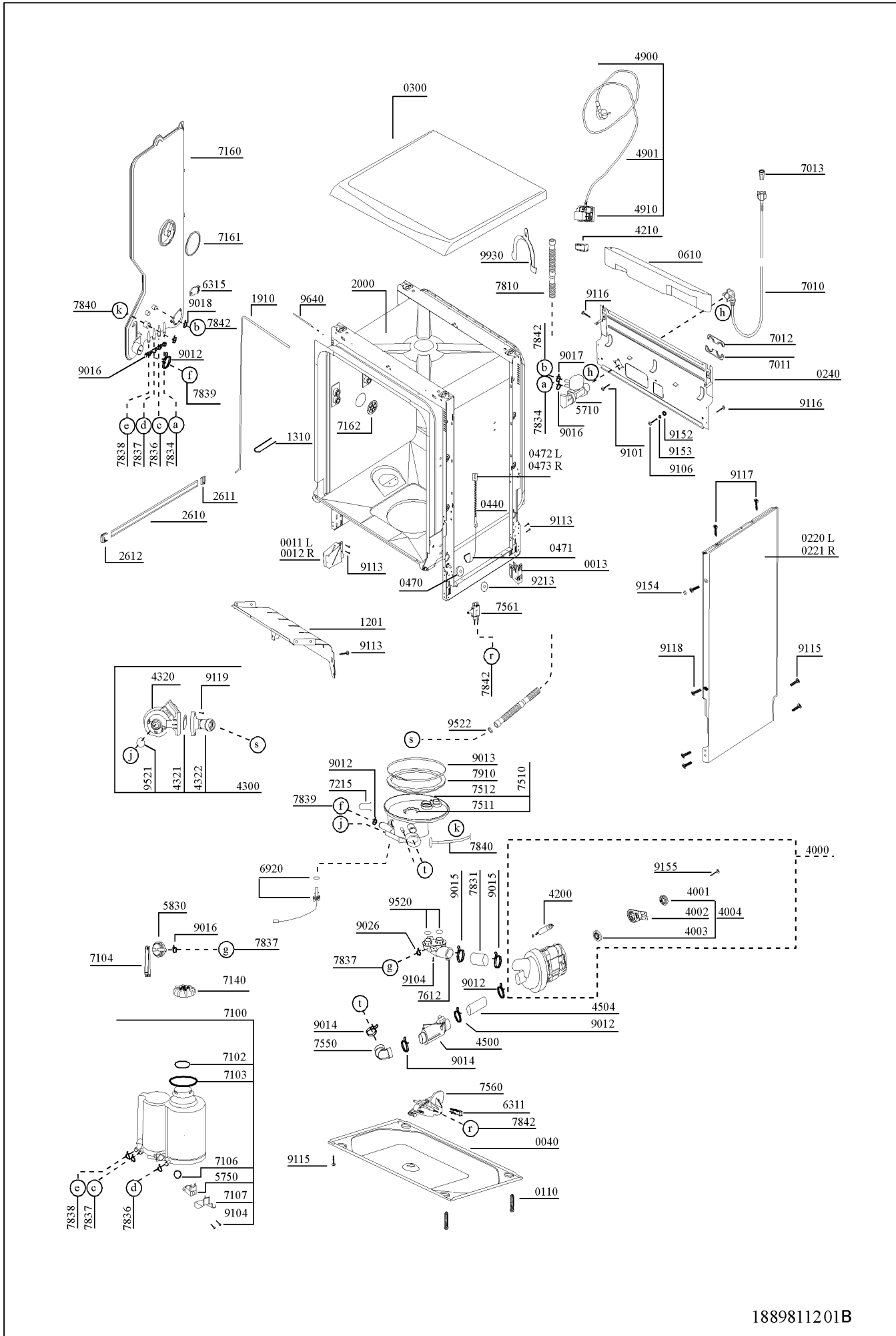
Pos. No.	12NC Code	Description
432 1	4812 466 88549	Gasket Drain pump
432 2	4812 466 58013	Holder Pump gasket
450 0	4812 259 28684	Heating element
450 4	4812 530 29015	Bend Pump - Heater
480 0	4812 320 58083	Cable harness
480 3	4812 435 18096	Holder cable
490 0	4812 321 18114	Cable,mains (UK)
490 1	4812 321 18115	Cable,mains
491 0	4812 321 28397	Strain relief
500 0	4812 282 18498	Timer
505 0	4812 214 78493	Control board Type B
571 0	4812 281 28409	Inlet valve
575 0	4812 281 28408	Valve,magnet regener.
583 0	4812 271 28451	Pressostat
620 1	4812 452 10513	Holder knob
621 0	4812 276 28372	Switch,pushbut.
631 1	4812 271 28452	Switch overflow
631 5	4812 271 18016	Card Flowmeter
633 0	4812 271 38402	Microswitch door
680 0	4812 418 68211	Combidosage
680 1	4812 466 68639	Gasket
680 2	4812 271 58168	Switch,thermal
681 0	4812 466 68642	Lid rinse aid
681 1	4812 466 68643	O-Ring rinse aid cap
682 0	4812 466 88559	Gasket flap RMG
692 0	4812 282 68026	Feeler NTC
701 0	4812 530 29032	Hose, inlet
701 1	4812 404 78398	Holder hose lower part
701 2	4812 404 78399	Holder hose upper part
701 3	4812 480 58104	Filter
710 0	4812 418 68206	Monoblock
710 2	4812 466 68644	Ring Water softener
710 3	4812 466 68645	Gasket Water softener
710 4	4812 404 78401	Holder Pressure switch
710 6	4812 466 68646	Gasket Regeneration valve
710 7	4812 281 28407	Regen.valve
714 0	4812 418 68209	Lid Monoblock
716 0	4812 418 68277	Reg.dosage
716 1	4812 466 68647	Gasket Reg.dosage
716 2	4812 846 78002	Lock Reg.dosage
721 1	4812 360 68078	Spray arm lower cpl.
721 5	4812 435 18097	Clamp Drain hose
722 0	4812 360 68079	Spray arm upper
722 1	4812 360 68244	Spray arm upper
722 4	4812 360 68245	Spray arm washer
722 5	4812 360 68246	Spray arm central part
722 6	4812 360 68247	Spray arm fixing nut
722 7	4812 360 68248	Spray arm
726 0	4812 530 28893	Tube
726 1	4812 530 29016	Tube
726 2	4812 530 29017	Tube
726 3	4812 466 28126	Gasket spray feedhose
726 4	4812 466 68648	Holder spray arm hose
726 5	4812 466 68649	Guide
726 6	4812 466 68651	Hose upper spray feed

Spare part list

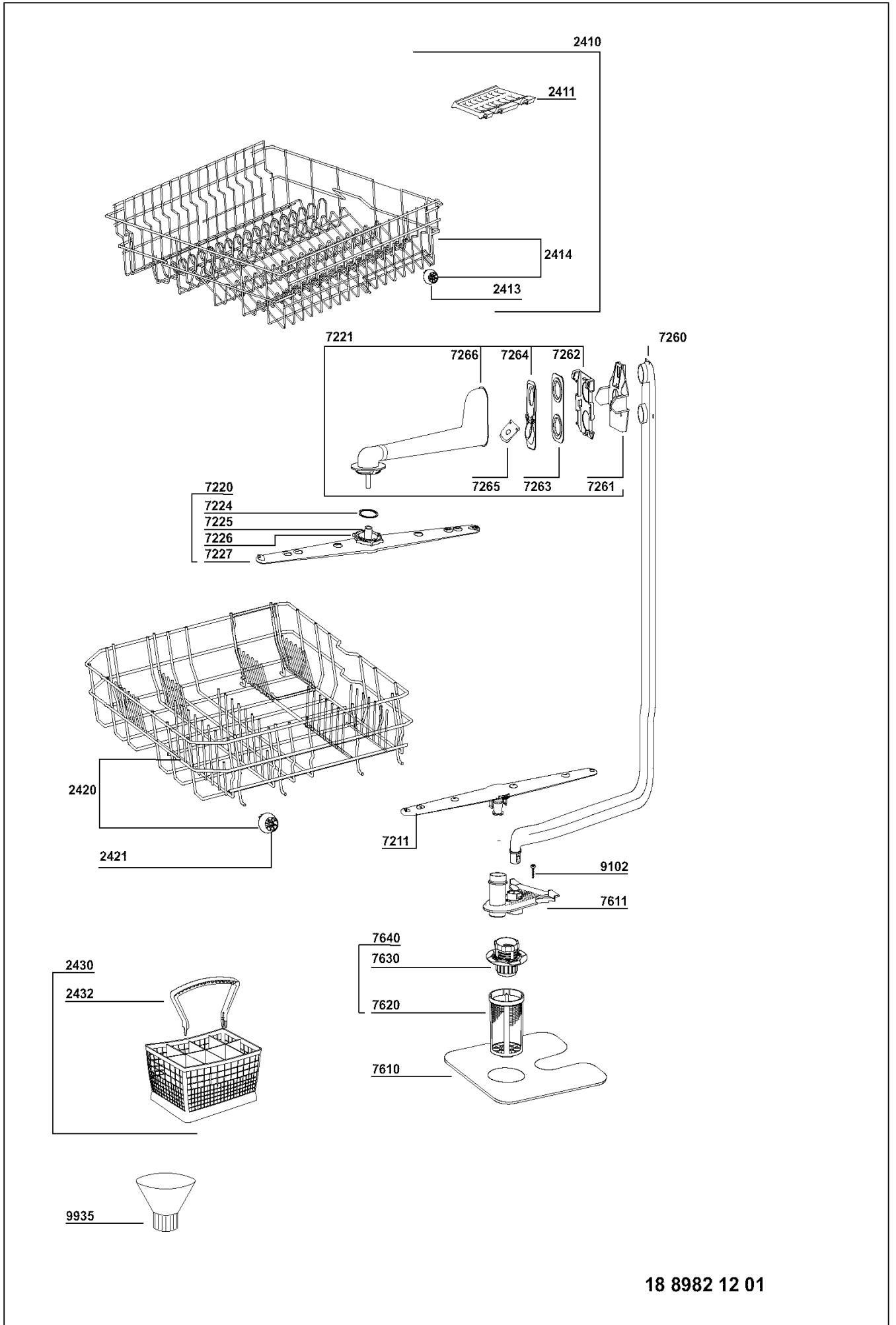
Model ADP262WH
Service No. 851126215513
Version 851126215513

Pos. No.	12NC Code	Description
751 0	4812 418 18361	Water collector
751 1	4812 418 18298	Water collector Vortex breaker
751 2	4812 418 18398	Water collector
755 0	4812 530 29018	Hose heater - sump
756 0	4812 271 18017	Switch over flow
756 1	4812 548 28035	Floater
761 0	4812 480 58095	Sieve fine
761 1	4812 480 58126	Filter support group
761 2	4812 418 18301	Guide water
764 0	4812 480 58103	Filter
781 0	4812 530 29033	Hose,draining
783 1	4812 530 58121	Hose pump-sump
783 4	4812 530 58122	Hose water inlet-regunit
783 6	4812 530 58152	Hose regunit-softener
783 7	4812 530 58153	Hose
783 8	4812 530 58154	Hose
783 9	4812 530 58151	Hose
784 0	4812 530 58135	Hose
784 2	4812 530 58155	Hose
791 0	4812 532 68093	Gasket sump
901 2	4812 401 18577	Strap
901 3	4812 401 18493	Strap sump
901 4	4812 401 18494	Strap 47
901 5	4812 401 18495	Strap 40
901 7	4812 401 18497	Strap 9,1
901 8	4812 401 18498	Strap 8,6
902 6	4812 401 48578	Strap 47
910 1	4812 502 18473	Screw PT 4x18
910 2	4812 502 18456	Screw 4x18
910 4	4812 502 18457	Screw 4x14
910 5	4812 502 18458	Screw 4x16
910 6	4812 501 18003	Screw
911 2	4812 502 18459	Screw M4x10
911 3	4812 502 18461	Screw M4x8
911 4	4812 502 18462	Screw
911 5	4812 502 18463	Screw 3,9x19
911 6	4812 502 18464	Screw
911 7	4812 502 18465	Screw 3,9x10
911 7	4812 502 18471	Screw 3,9x9,5
911 8	4812 502 18466	Screw
911 9	4812 502 18467	Screw 5x20
915 2	4812 523 18029	Nut
915 3	4812 502 18468	Screw M5x8
915 3	4812 502 18472	Washer M5x8
915 4	4812 846 78003	Cap screw
915 5	4812 404 18146	Screw 5x22
921 3	4812 526 48073	Washer
952 0	4812 630 58097	O-Ring
952 1	4812 630 58098	O-Ring
952 2	4812 630 58099	O-Ring
964 0	4812 022 98002	Insulation pad
993 0	4819 530 29028	Bow
993 5	4822 532 80216	Funnel salt

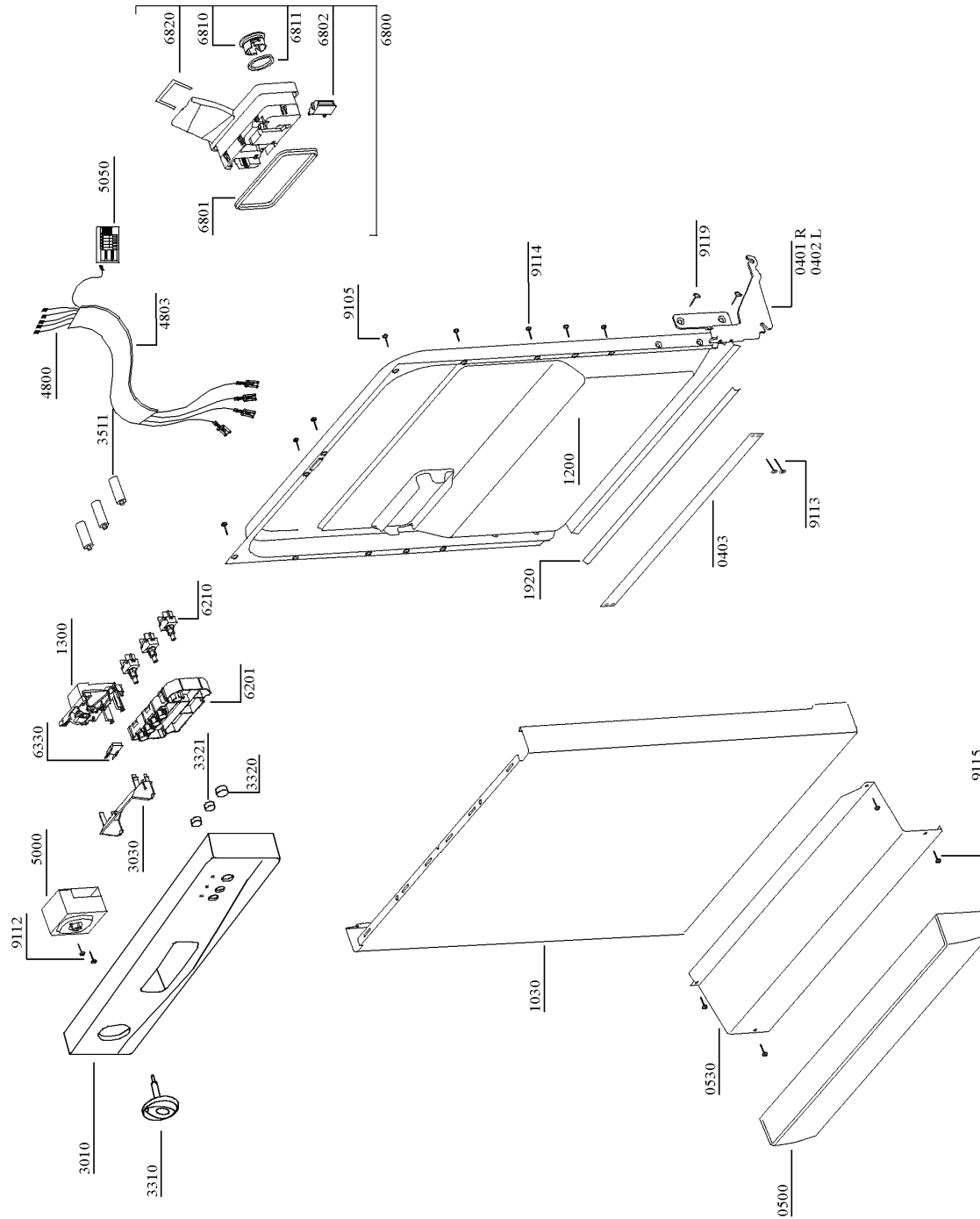
Exploded view



Exploded view

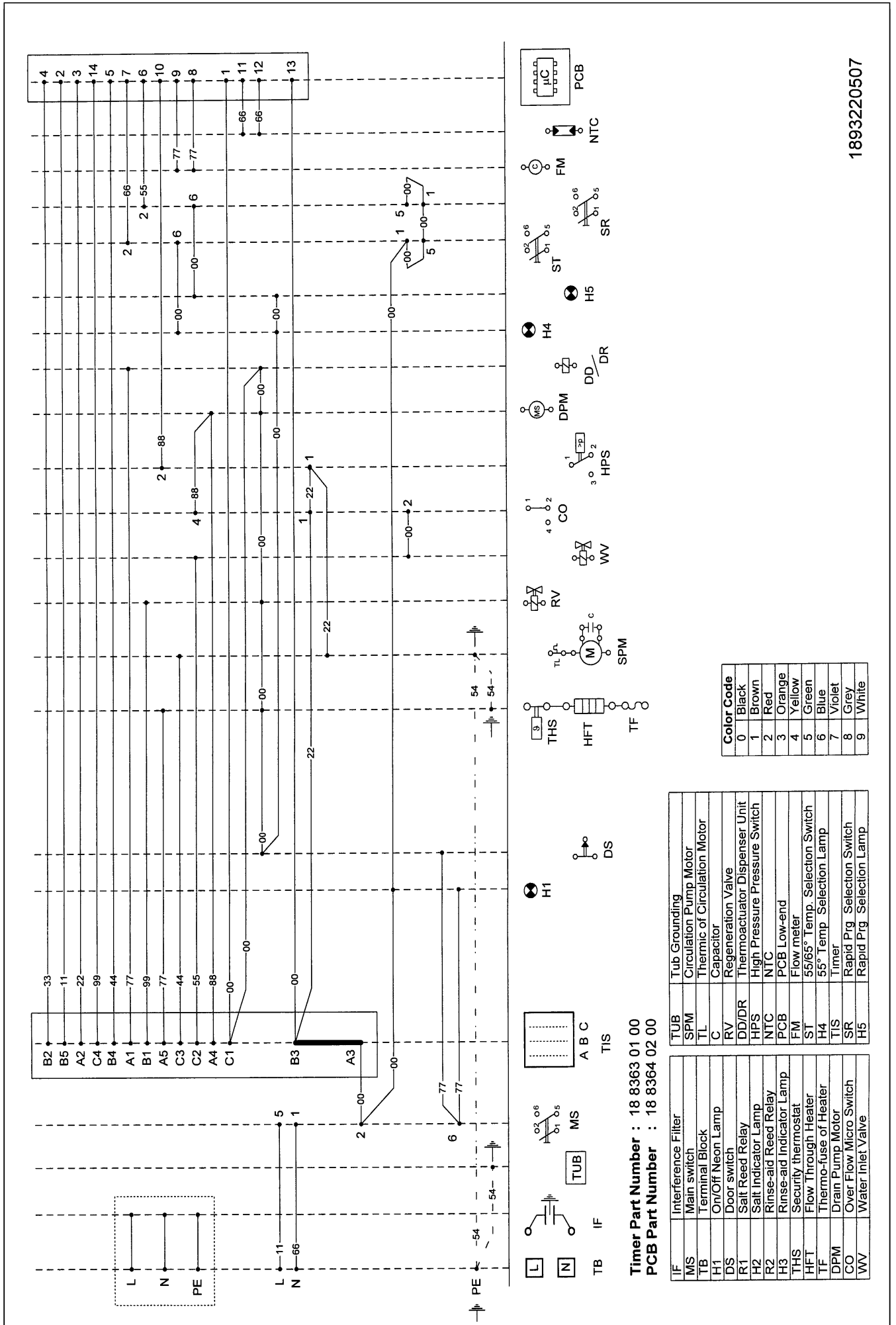


Exploded view



1889831010

Wiring diagram



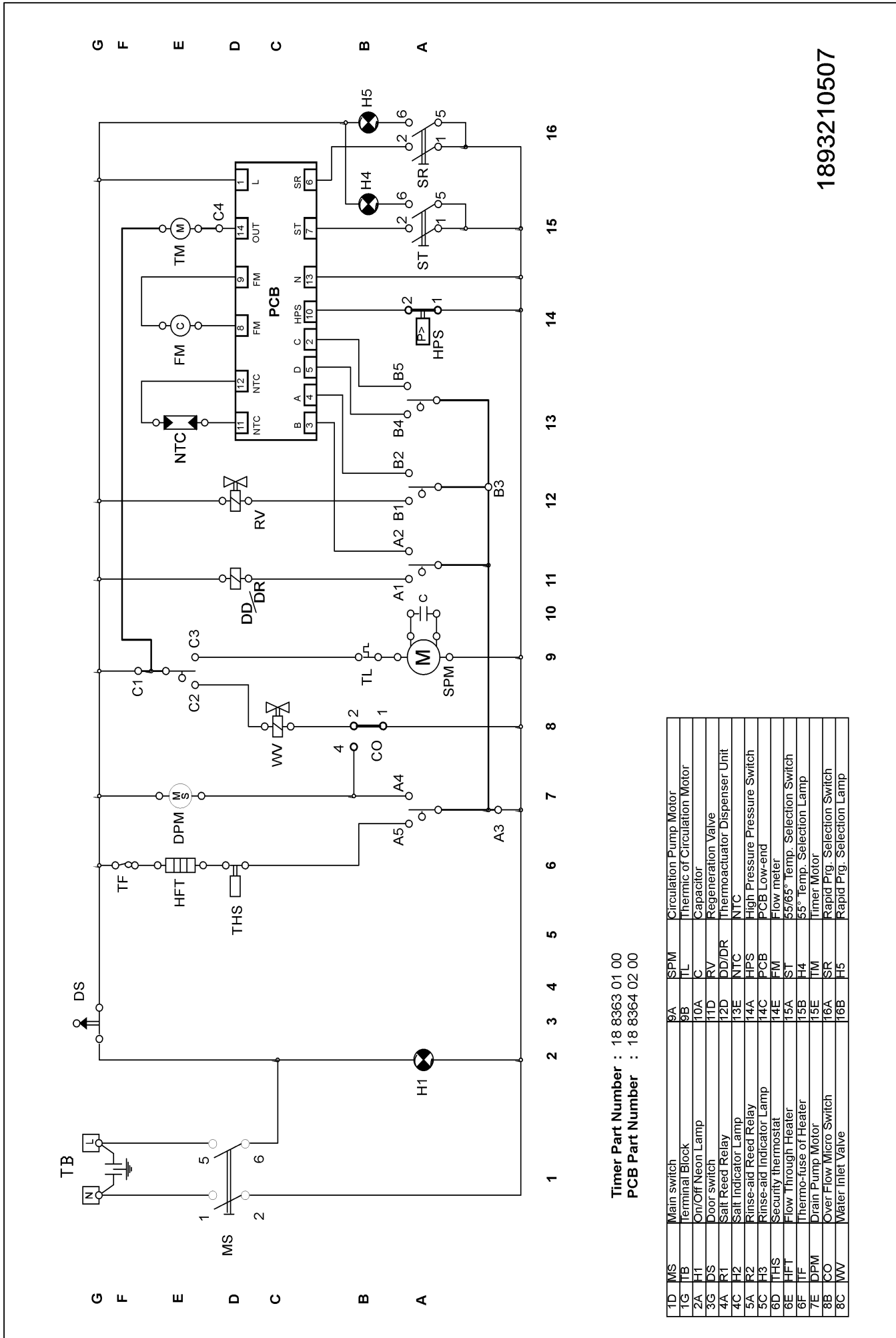
Timer Part Number : 18 8363 01 00
PCB Part Number : 18 8364 02 00

IF	Interference Filter	SPM	Tub Grounding
MS	Main switch	Circulation Pump Motor	Circulation Pump Motor
TB	Terminal Block	TL	Thermic of Circulation Motor
H1	On/Off Neon Lamp	C	Capacitor
DS	Door switch	RV	Regeneration Valve
R1	Salt Reed Relay	DD/DR	Thermoactuator Dispenser Unit
H2	Salt Indicator Lamp	HPS	High Pressure Pressure Switch
R2	Rinse-aid Reed Relay	NTC	NTC
H3	Security thermostat	PCB	PCB Low-end
THS	Flow meter	FM	Flow meter
HFT	Flow Through Heater	ST	55/65° Temp. Selection Switch
TF	Thermo-Fuse of Heater	H4	55° Temp Selection Lamp
DPM	Drain Pump Motor	TIS	Timer
CO	Over Flow Micro Switch	SR	Rapid Prig Selection Switch
WV	Water Inlet Valve	H5	Rapid Prig Selection Lamp

Color Code	Color
0	Black
1	Brown
2	Red
3	Orange
4	Yellow
5	Green
6	Blue
7	Violet
8	Grey
9	White

1893220507

Circuit diagram



1893210507

Timer Part Number : 18 8363 01 00
PCB Part Number : 18 8364 02 00

1D	MS	Main switch	9A	SPM	Circulation Pump Motor
1G	TB	Terminal Block	9B	TL	Thermic of Circulation Motor
2A	H1	On/Off Neon Lamp	10A	C	Capacitor
3G	DS	Door switch	11D	RV	Regeneration Valve
4A	R1	Salt Reed Relay	12D	DD/DR	Thermoactuator Dispenser Unit
4C	F2	Salt Indicator Lamp	13E	NTC	NTC
5A	R2	Rinse-aid Reed Relay	14A	HPS	High Pressure Pressure Switch
5C	F3	Rinse-aid Indicator Lamp	14C	PCB	PCB Low-end
6D	THS	Security thermostat	14E	FM	Flow meter
6E	HFT	Flow Through Heater	15A	ST	55/65° Temp. Selection Switch
6F	IF	Thermo-fuse of Heater	15B	H4	55° Temp. Selection Lamp
7E	DPM	Drain Pump Motor	15E	TM	Timer Motor
8B	CO	Over Flow Micro Switch	16A	SR	Rapid Prg. Selection Switch
8C	WV	Water Inlet Valve	16B	H5	Rapid Prg. Selection Lamp

Text/Legend

