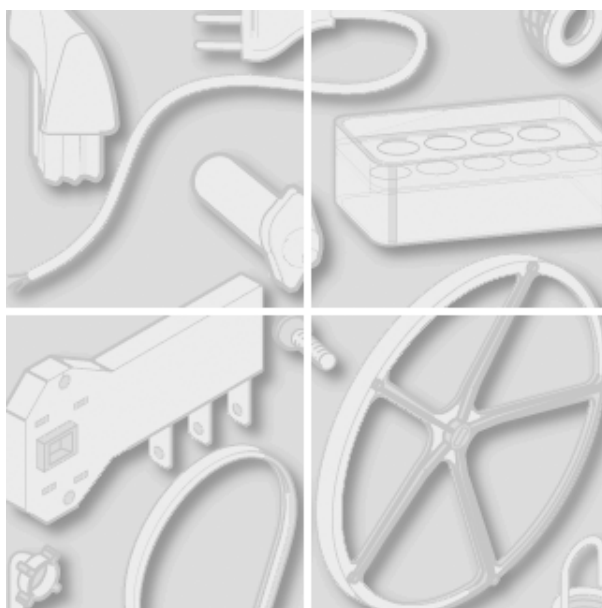


Indesit Company



Modell típus:
LB414SPT

termékkód:
03296

Általános jegyzet

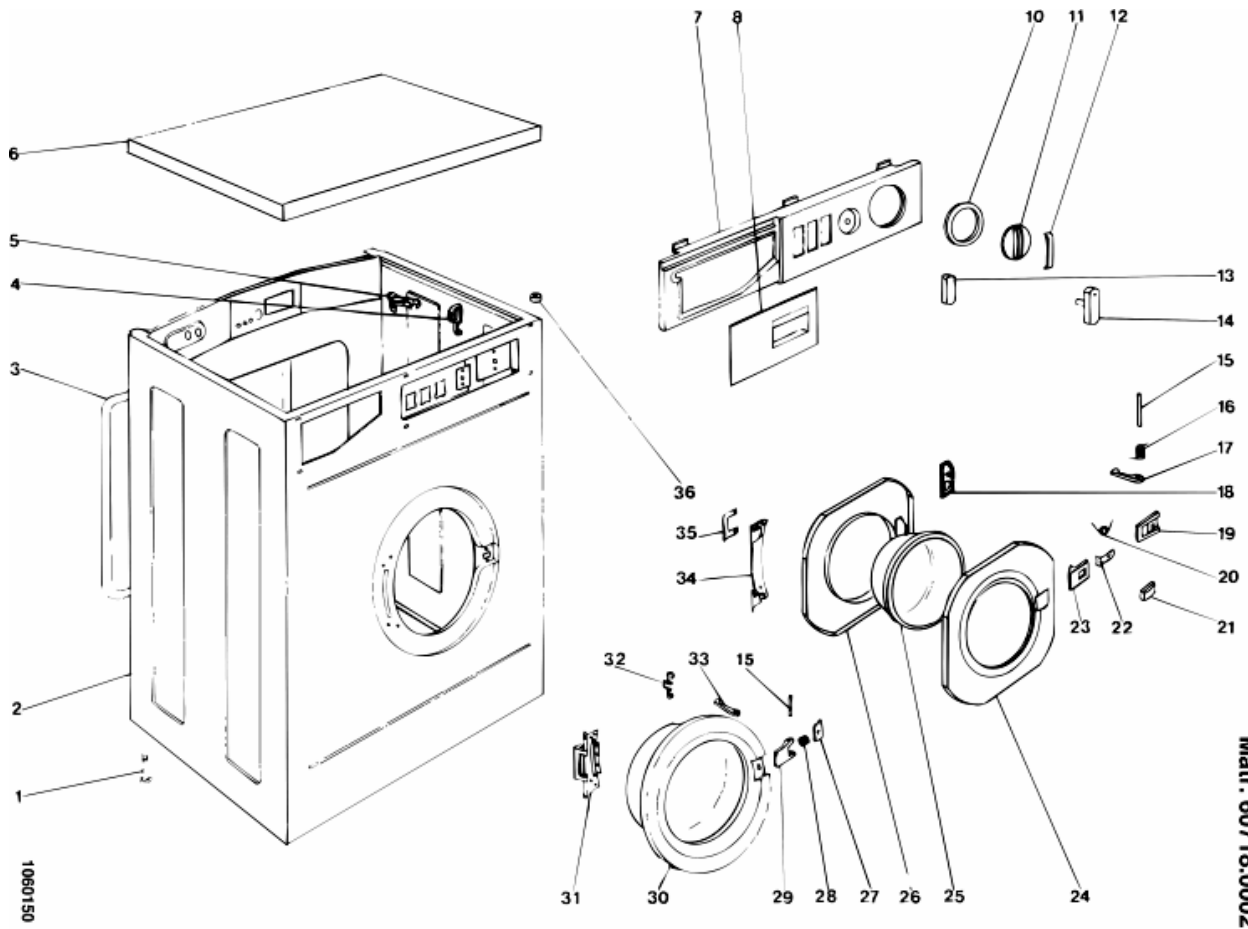
Technikai Dokumentáció irányelvei

Itt néhány általános információ található a technikai dokumentáció egyszerűbb használatához.

1. Azonos termékcsalád típusai azonos robbantott ábrát tartalmaznak, mely a teljes alkatrész választékot mutatja, általánosságban, nem szükséges, hogy az adott terméknek is alkatrésze az ábrán feltüntetett.
 2. Némely alkatrész bemutatása nem lehetséges közvetlenül a robbantott ábrákon (használati útmutatók, speciális szerelő csomagok, stb...) Ezen kódok megtalálhatók az alkatrészlistán azonos hivatkozási számmal azoknál ahol az alkatrészek be vannak építve vagy 099,999 hivatkozással. A kezelési utasítás, ha már létezik, a 000 referencia számmal lesz ellátva.
 3. Minden robbantott ábra jobb felső sarkában megtalálható a gyári szám, ami mutatja bizonyos modellek gyártásának kezdetét, néhány modellnek létezhet több robbantott ábrája az adott kategóriában, ami a gyári számok alapján különbözik egymástól és egy másik alkatrészlista tartozik hozzá. Ebben az esetben a gyári szám megadása szükséges a helyes alkatrész biztosításához. A robbantott ábra megfelel a legújabb gyári számnak, de az ez előttiékhöz szükséges a megfelelő kiegészítés.
 4. A robbantott ábrák további frissítéseket igényelnek akár már közvetlenül a megjelenés után. Új alkatrészek hozzáadása a jelenlegi referenciaszámok folytatásával történik. A robbantott ábra felülvizsgálati száma a gyári szám utolsó négy digitjében látszódik, a jobb felső sarokban.
 5. A robbantott ábrához tartozó alkatrész lista mutatja a vonatkozó kódokat több modellre is, minden egyes alkatrészhez más információ is rendelkezésre áll.
- REF:
- INDUSTRIAL KÓD: a termék különböző változatainak listája (jelezve a termék címkéjén) ahol ez az alkatrész használatos; MEGJEGYZÉS: az információ(k) kódszáma, ami jelöli a teljes szakmai beavatkozást, figyelni a változásokat vagy segíti megtalálni a helyes alkatrész kódot.
6. Néhány megjegyzés ugyanabban a részben általános ezért nem csatolódik közvetlenül az alkatrészhez. Azért, hogy a legjobban követhessük a termék változásait, a legjobb, ha követjük az összes megjegyzést és folyamatosan ellenőrizzük a dokumentáció frissítését.
 7. A technikai dokumentáció borítója megmutatja a model nevet és termékkódját

1060150

Robbantott ábrák



Matr. 60718.0002

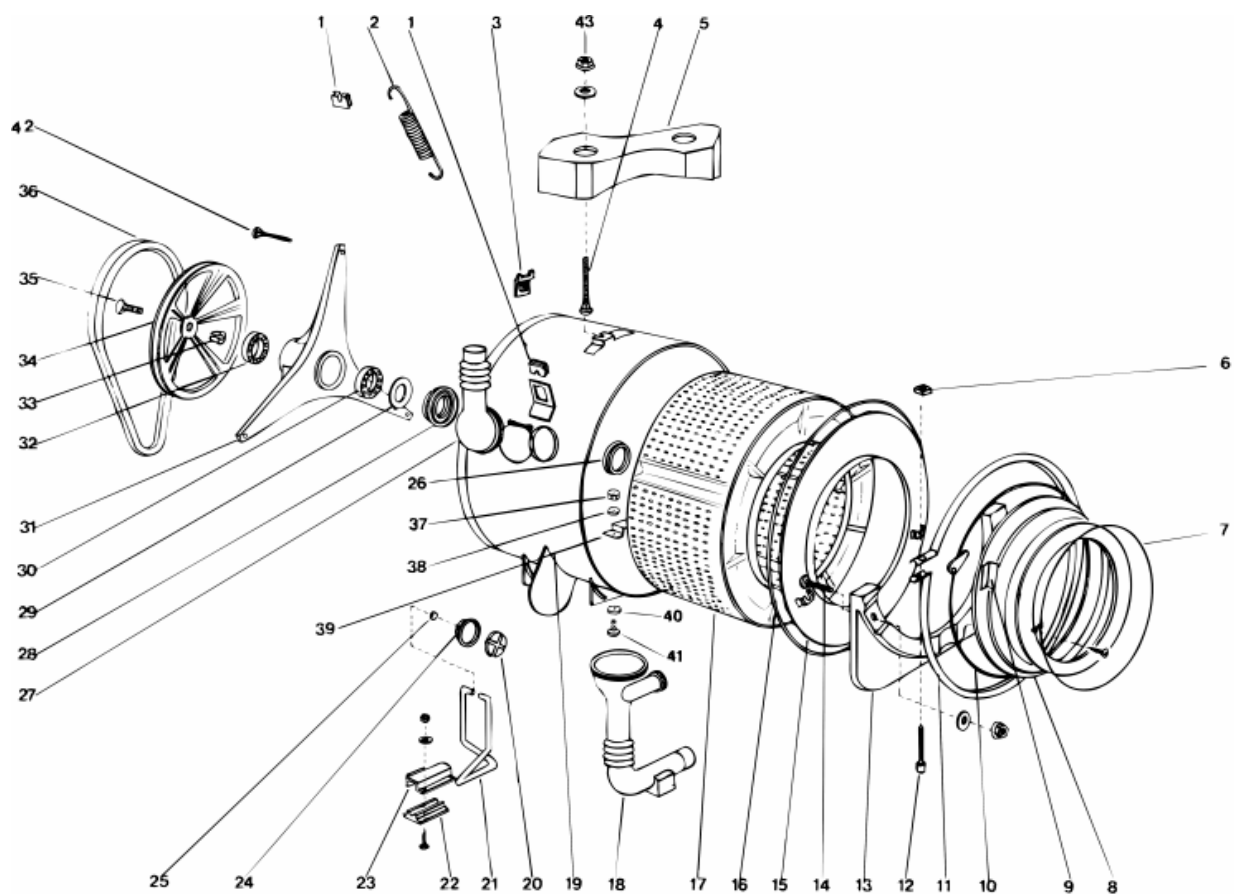
1060150

alkatrész lista

refer	Kód	Az S/N	To S/N	Helyettesít	Leírás	jegyzet	ipari kód
001	C00019678				láb készlet		
002	C00023819				white 26 cabinet	0106552	
003	C00019664				rear cover - white		
004	C00024552				hose holder		
005	C00023846				wiring clamp 6/12		
005	C00023847				wiring clamp 11/18		
006	C00023820				white 26 top panel		
007	C00025033				dashboard castoro74		
007	C00030200				dashboard + handle		
008	C00025023			1 x C00025034	drawer handle castoro74		
009	C00015850				kapcsoló 'ar 412-515-616-818'		
010	C00025024				programme disc castoro74	0106427	
011	C00019693				timer knob (castoro)	0106427	
						0106454	
012	C00019761				knob front cover (castoro)	0106454	
013	C00025031				switch button cover castoro74	0106427	
						0106454	
015	C00003044				fogantyú pecek		
025	C00028304				ablak üveg (80107)'lb836enl'		
027	C00025027			1 x C00015923	handle button arancio	0106426	
027	C00038692				handle button c74		
028	C00015437				handle button spring		
029	C00020765			1 x C00016632	lid handle castoro74	0106427	
030	C00016726				inner frame lid		
030	C00025025			1 x C00003017	lid cromato	0106426	
						0106427	
030	C00033231				frame platet lid		
031	C00015463				hinge		
032	C00015434			1 x C00016632	handle spring		
032	C00025256				handle spring		
033	C00003052				lid catch		
036	C00015835				worktop retainer		

1060250

Robbantott ábrák



Matr. 60718.0003

1060250

alkatrész lista

refer	Kód	Az S/N	To S/N	Helyettesít	Leírás	jegyzet	ipari kód
001	C00019675				rugó gyűrű		
002	C00021911			2 x C00029165	tank spring red 129 mm		
002	C00029165				tartály rugó sárga l= 135mm		
003	C00019667				spider retaining bracket		
004	C00015492				screw m8x80 t.t.l.		
004	C00018234				screw m8x40 ttp		
005	C00019757				felső ellensúly 16 kg		
005	C00025208				counterweight pad	0106423	
005	C00037346				nylon washer		
006	C00023841				nut for clamping band tank front		
007	C00008665			1 x C00033041	bellows clamp - case front		
007	C00032708				expander	0106387	
008	C00024551				ablak tömítés 'gazdaságos'	0106411	
009	C00019651				clear plastic protection		
010	C00019711			1 x C00036780	bellows clamp (over centre)		
011	C00003018				clamping band tank front		
012	C00023840				bolt m6 x 80 for clamping band		
013	C00018237			2 x C00036952 1 x C00052574	front counterweight		
015	C00021909			1 x C00031367	tub front (41114)		
015	C00031367			1 x C00020941 1 x C00031029	tank front - enamel	0106379	
016	C00013579				seal - tank front		
017	C00021528				drum (40612)	0106356	
017	C00029154				drum 400/600 rpm(80614)str.39	0106356 0106364 0106412	
017	C00034398				kit drum triangle rod'600 rpm		
017	C00036178				drum for star wheel with sealing	0106448 0106474	
018	C00023844				hose-tub to pump 55 mm	0106344	
018	C00027926				leeresztő fűvóka d. 70 mm	0106344	
019	C00023839			1 x C00027925 1 x C00027926 1 x C00027927	tub outer	0106344	

1060250

alkatrész lista

refer	Kód	Az S/N	To S/N	Helyettesít	Leírás	jegyzet	ipari kód
019	C00027927			1 x C00027928	outer tank kit	0106344	
020	C00003036			1 x C00029588	ferodo betét	0106440	
021	C00019696				rugóköteg		
022	C00019676				plastic bush for spring clamp		
023	C00019666				saddle - spring clamp		
024	C00003034			1 x C00029588	saru készlet		
025	C00019677				gömbcsukló		
026	C00019968				kocsi tengely tömítés 600 fordulat	0106412	
027	C00024553			1 x C00027925	hose dispenser to tub	0106344	
027	C00027925			1 x C00027923	hose-dispenser to tank	0106344	
028	C00019718				kereszt elem tömítés	0106408	
						0106412	
028	C00033025				kereszt elem tömítés tömítő		
029	C00023111				keresztelem tárcsa 600/400	0106412	
029	C00033018				sealing ring 600 rpm 40x22x8.5	0106448	
						0106474	
031	C00019966			1 x C00033025	star wheel 600/400rpm	0106266	
				1 x C00034202		0106408	
						0106412	
031	C00033021				star wheel with sealing rings 600	0106448	
						0106474	
031	C00034202				star wheel 600/400rpm v-ring	0106266	
						0106408	
						0106412	
032	C00002590				csapágy 17x40x12 6203-2z skf	0106266	
033	C00019967				bush pulley	0106356	
033	C00029152				tárcsa persely 400/600 g.(80614)	0106356	
						0106474	
034	C00019971				driven pulley 600rpm	0106356	
034	C00029153				vezetett tárcsa 400/600 fordulat	0106356	
						0106448	
						0106474	
035	C00019802				vezetett tárcsa rögzítő csavar	0106449	
						0106474	
036	C00003089				belt (2/12poles-400rpm)		

1060250

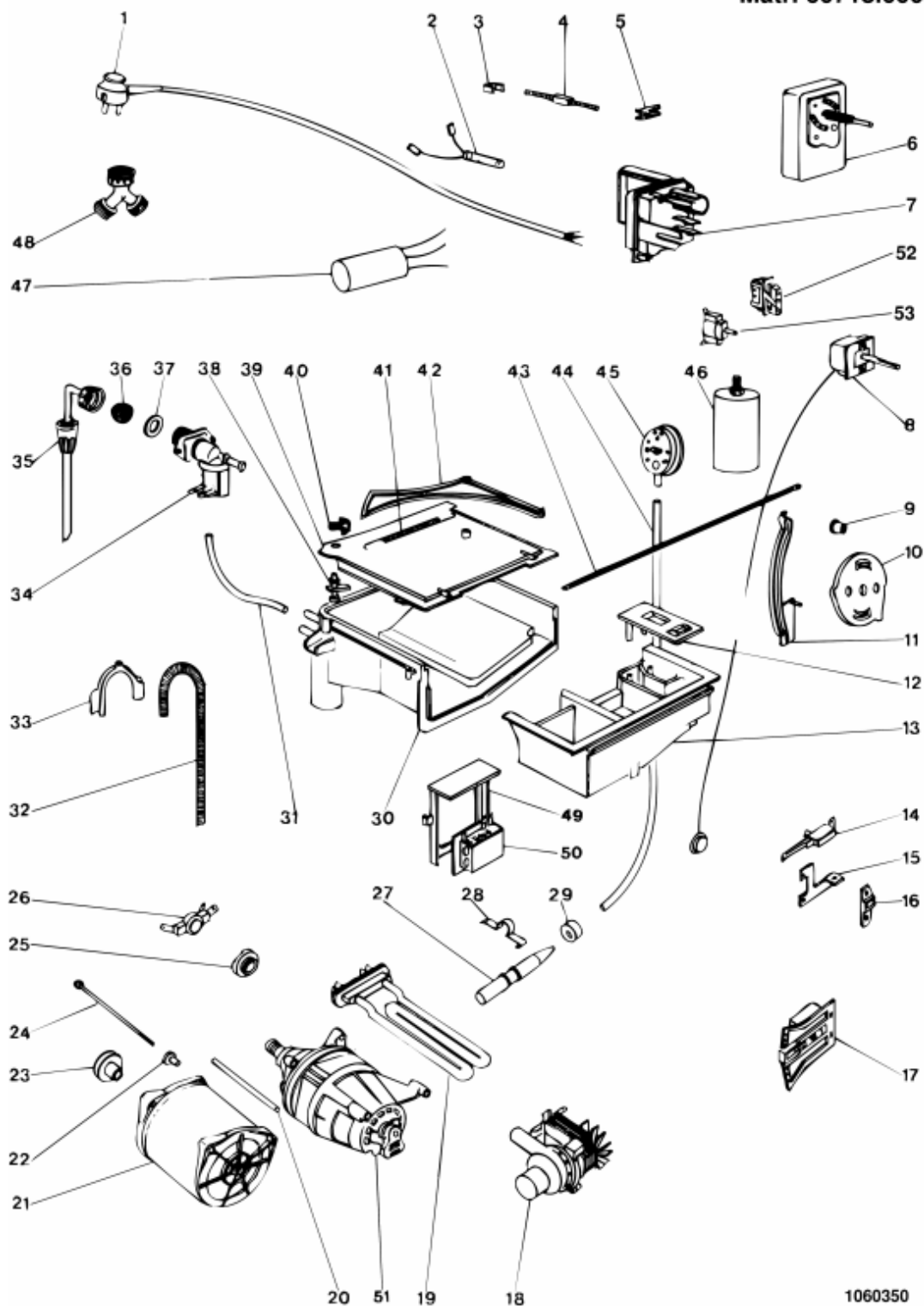
alkatrész lista

refer	Kód	Az S/N	To S/N	Helyettesít	Leírás	jegyzet	ipari kód
036	C00027191				ékszíj 9ml 122 1223 mm'400g.		
037	C00037135				önzáró anya m4	0106415	
038	C00037142			1 x C00037132	washer 4x12x1 stainless	0106415	
039	C00037083			1 x C00037177	ellenállás bilincs	0106415	
040	C00037133			1 x C00037132	seal	0106415	
041	C00037132				csavar készlet m4x12 tmt inox	0106415	

1060350

Robbantott ábrák

Matr. 60718.0003



1060350

alkatrész lista

refer	Kód	Az S/N	To S/N	Helyettesít	Leírás	jegyzet	ipari kód
001	C00022357			1 x C00024521	supply cable 3x1 schuko l= 2,70 m		
001	C00023863				harness elbi 1128	0106368	0106370
003	C00015868				saddle clamp (earth)		
004	C00003143				earthing screw		
005	C00019748				terminal connector		
006	C00024085				timer elbi 1128		
007	C00019747				terminal block box	0106357	
007	C00029204				elettrogibi kapcsoléc doboz		
009	C00020183				bush for timer cam	0106419	0106464
009	C00031082				bush for timer cam black	0106419	
010	C00020184				distributor cam 9061.02 / 1128	0106464	
010	C00043849				distributor cam 9061.02		
011	C00023848				bütyök letapogató 'gazdaságos'		
012	C00019840				adalékok fedél	0106486	
013	C00022678				mosószer tartály	0106486	
014	C00003099			1 x C00027109 1 x C00027110	microswitch	0106335	0106368 0106370
014	C00027110				microswitch s 16 (70707)	0106368	0106370
015	C00003039			1 x C00027109 1 x C00027110	microswitch holder	0106335	
016	C00003038				microswitch tongue	0106335	
016	C00027109				microswitch holder (70707)		
018	C00023868				öntisztuló szivattyú (készlet)	0106391	0106429
019	C00019973				ellenállás 1950 w.'ar658t'/816409	0106457	
020	C00019965				motor távtartó 'ar658t'		
021	C00015851			1 x C00003096 1 x C00019740	motor 2/12 poles rade k.		
022	C00019682				motor pecek persely 20 mm		
023	C00003090				driving pulley (2/12poles-400rpm)		
024	C00019964				motor bolt m6 x 212 te		

1060350

alkatrész lista

refer	Kód	Az S/N	To S/N	Helyettesít	Leírás	jegyzet	ipari kód
025	C00014917				termosztát tömítés 'ls312 570'		
025	C00020181				termosztát furat dugó 'ar414'		
026	C00015856				termosztát 1t 87[c nc 'ar 410-818'		
027	C00019730				levegő csapda	0106429	
028	C00020025				air trap clip		
029	C00019755				anti-vibration bush (foam)		
030	C00019733				tölcsér	0106486	
031	C00015497			1 x C00015498	hose electrovalve to dispenser		
032	C00023860				leeresztő cső spirális l=1750		
033	C00019902				spirál leeresztő cső alátét		
033	C00020664				collar for drain hose		
034	C00019734				elektromos szelep 1e 1u 8 lt		
035	C00003070				töltőcső 1500 mm 'hajlított		
036	C00005781				töltőcső szűrő		
037	C00005572				töltőcső tömítés		
038	C00021662				dispenser cold water		
039	C00019726			1 x C00020878	hopper cover	0106486	
040	C00019692			1 x C00028568	toothed moulding for diverter	0106349	
				1 x C00028569			
040	C00028569				osztósín 19 fogas (80126)		
041	C00019708				dispenser spring		
042	C00019707			1 x C00028568	diverter pivot arm	0106349	
				1 x C00028569			
042	C00028568				diverter pivot arm 18 teeth		
043	C00023862				metal operating rod		
044	C00019731				pressure switch hose 600mm.	0106429	
045	C00023867				pressure switch 1 level 220/95		
046	C00013692				capacitor 11mf2/12 poli rade		
046	C00019740				capacitor 14mf 8 micron		
047	C00019648			1 x C00026359	radio interference soppessor		
052	C00015850				kapcsoló 'ar 412-515-616-818'		

jegyzet

0106266: SUGGESTIONS ON REPLACING BEARINGS FOR STAR WHEEL

Do not replace the bearings of the tank star wheel, if the fitting is deformed or if the bearings have slipped out of place. In this case, replace the star wheel, to avoid having to replace the bearings again after a relatively short time. This problem occurs principally on aluminium star wheels.

0106335: ELIMINATED BRACKET FOR MICROSWITCH

The microswitch support Cod. 003039 has been eliminated as from serial number 70707.0001. A new microswitch Cod.027110 and a new microswitch tongue Cod.027109 replace those currently mounted. The new parts are not individually interchangeable with the old parts while the new unit as a whole is.

0106344: MODIFIED UNIONS ON WASHERS AND ARC

The tubs of the economic compact series of washing machines were modified as from serial no. 71027.0001 in order to reduce production waste and to eliminate the hose clamp which fixes the dispenser to tub hose. The modification is as follows: the diameter of the tub to pump hose nozzle has been increased to 70 mm and the dispenser to tub hose has been replaced by a hole on the tub. The following have also been modified: the dispenser to tub hose is now installed by fitting the groove on the bottom of the sheet plate thickness and the tub to pump hose compensate for the larger diameter of the nozzle. The new enameled tub Cod.027927 and stainless steel tub Cod.027928 complete with dispenser to tub hose Cod.027925 and tub to pump hose Cod.027926 may be installed to replace the old version tubs.

0106349: MODIFIED DISPENSER GUIDE AND SETTER

As from serial no. 80126.0001, the number of teeth on the pivot arm diverter (from 22 to 18) and on the diverter geared moulding (from 21 to

19) have been reduced on all the washer and dryer-washers in order to improve the cold water distributor adjustment.

Codes are as follows:

Cod. 028568 - 18 tooth pivot arm diverter (80126)

Cod. 028569 - 19 tooth diverter geared moulding (80126) The two new parts are not individually interchangeable with premodification parts but are interchangeable if installed together.

0106356: MODIFIED BASKET ON 400-600 RPM WASHERS

As from serial no. 80614.0001 the drum, the driven pulley and the pulley bushing been modified on all the 400 and 600 rev. washers with with structures 80 e 39 in order to further the shaft-driven pulley bushing coupling.

The codes of the new parts are as follows:

Washer str.80

Cod. 029089 - 400/600 rev. drum Str.80 AR

Cod. 029152 - 400/600 pulley bushing

Cod. 029153 - 400/600 rev. driven pulley Washer str.39 - LB (Economic)

Cod. 029154 - 400/600 rev. drum Str.39 LB

Cod. 029152 - 400/600 rev. pulley bushing

Cod. 029153 - 400/600 rev. driven pulley This modification eliminates the use of Loctite 638 during production which was used to fix the driven pulley.

The new parts may be used to replace premodification parts if fitted together.

0106357: MORSETTIERA ELETTRIGIBI

As from serial no. 80620.0001 a new terminal board ELETTRIGIBI Code 029204 will be fitted on all washers and washer-driers This modification has led to the modification of the radio antijamming and wiring since the ground wire is fixed to the terminal board with fastons and not with screws.

The hole for fixing to the cabinet has also been modified since the terminal board has a different shape.

The modified filters and cables are indicated under the same codes of the premodification parts since there are interchangeable.

Before replacing with premodification parts replace the eyelet with fastons on the earthing wire and fit faston covers on the line and neutral wire fastons.

The modified cabinets are indicated under the same codes as the premodification cabinets until stocks last. They are interchangeable only if the specific terminal board is fitted.

Important: please note that during repairs the ground wire of the antijamming filter must be connected to the terminal board as otherwise there will be electrical dissipation from the appliance with serious danger to the user.

0106364: FORATURA POSTERIORE CESTELLI

As from serial no. 90119.0001, holes have been made on the back drum flange on all washing machines with structure 39, 80 and on the Snella series of washing machines.

In addition on all the 1000 rpm washing machine and Margherita washing machines with dryer and on the Marcherit Mulinell 800 rpm the thickness of the drum casing has been increased from 4/10 to 5/19 mm.

The codes of the modified drums are as follows:

029149 - Drum 1000 rpm AR - CD 5/10 mm

029088 - Drum 800 rpm AR - CD

029089 - Drum 400-600 rpm Str. 80

029155 - Drum 400 - 600 - 800 rpm ARC

029090 - Drum 800 rpm LB Str. 39

029154 - Drum 400 - 600 rpm LB str. 39

030381 - Drum assy 1200 rpm AM 5/10 mm

030382 - Drum assy 800 rpm AM 5/10 mm The drums are interchangeable with premodification models and are indicated under the same SAT codes.

0106368: REPLACED MICROSWITCH WITH DELAY MICROSWITCH

As from serial no. 90224.0001, the microswtich with microdelay switch code 011140 have been replaced on washing machine LB445SFR for trademark reasons.

This modification has required the use of new wiring (code 030721), a new handle cover (code 022487) and a new owner's manual (code 030722).

The above parts may be fitted on premodification models if mounted together.

0106370: ADDITION OF A DELAY MICROSWITCH

As from serial no. 90303.0001, the microswitch has been replaced with a micro delay switch code 011140 on all washing machines LB455SFR white 26 and bresil for trademark reasons.

New wiring (code 030788) and the following new parts have been fitted for the modification:

Code 022421 - Beaver 74 handle;

Code 022487 - White 26 handle;

Code 030722 - Owner's Manual.

If used together the above parts may be fitted on premodification models.

0106379: ADDITION OF NEW TUB COVERS

With the introduction of the "Margherita Restyling", a new modified tub lid has been fitted on all the washer and tumble dryer models.

The modification involves a new shaped bracket, which ensures that the part on the tub lid closes perfectly and perfect fixing of the front counterweight screw.

The new lid is fitted on all the appliances of the following series:

Margherita AR - CD - AM;

Quadrifoglio LB;

Snella ARC.

The codes of the new lids are:
031029 - Stainless steel tub lid;
031367 - Enamelled tub lid.

The premodification lids fitted on models in the above ranges, will be supplied until stocks last.

0106387: EXPANDER FOR FASTENING RING SEAL

As from serial no. 00412.001 the fixing hole of the front gasket ring has been changed from round to square on all the cabinets of the washer and tumble dryers.

A spacer cod. 032708 can now be fitted which stops the ring screw from scratching the cabinet and therefore prevents the formation of rust.

0106391: MODIFIED SELF-CLEANING PUMPS

As from serial no. 00717.0001, an anti-fluff plate has been fitted in the self-cleaning pumps which prevents the fluff from entering between the pump gasket and the fan shaft.

This problem caused water leakages.

The pumps which have been modified as above are as follows:

027465 - Self-cleaning pump for washer with drier 240 Volts;

027882 - Self-cleaning pump for washer with drier 220 Volts;

025788 - Self-cleaning pump for washer 240 Volts;

023868 - Self-cleaning pump for washer 220 Volts;

The new pumps can not be identified visibly.

The premodification pumps will be handled by the centralised spare parts warehouse until stocks last.

0106408: MODIFIED STAR WHEEL V-RING ON 600 RPM UNITS

As from serial no. 10201.0001, in order to improve the water seal of the hub tank area, the 600 RPM spider wheel code 019966, has been modified.

The modification involves having increased the external diameter of the spider wheel hub to 70 mm.

This modification has involved the use of the following new parts:

Code 034202 - star hwheel 600 rpm

Code 033025 - Seal ring spider wheel gasket.

The two spider wheels can only be interchanged if the corresponding spider wheel gasket is fitted.

0106411: MODIFIED DOOR SEAL

As from de serial no. 10621.0001, the door gasket code number 024551, used in washing machines of the models Quadrifoglio and Compatta, has been changed in order to prevent the laundry from getting between the gasket and the drum, since the resulting friction can damage both the gasket and the laundry. The changed gasket has the same code number as the preceding one, and can be recognized by a reciding edge in the back, like Margherita, and by some stiffening ribs, used externally to improve its solidity. To set the new gasket in the place of the old one it is necessary to use the fixing ring code number 033041. The space-part wharehouse has still the old gasket in stock and this one will be delivered until it will be fully replaced by the new one. We remain at your disposal for any further information.

0106412: ANELLI TENUTA SU MODELLI 600 / 800 GIRI

As from serial no. 10705.0001, spider wheels with seal ring have been used on all the 400, 600 and 800 rpm washers in the Margherita and Quadrifoglio range in order improve the waterproof capacity of the shaft-drum-spider wheel area.

The new parts used are as follows:

400-600 rpm LB

Cod. 033021 - Spider wheel with 600 rpm seal rings;
Cod. 034398 - 600 rpm drum spider wheel;
Cod. 033018 - 600 rpm 40X22X8,5 seal ring;
Cod. 033026 - 100 g packet of Amplifon TA grease
Cod. 033025 - Seal ring spider wheel gasket;
Cod. 002590 - Bearing 6203-2Z
Cod. 036178 - Complete Str. 39 600 rpm drum

400-600 rpm AI - AV

Cod. 033021 - Spider wheel with 600 rpm seal ring.
Cod. 034398 - 600 rpm spider wheel;
Cod. 033018 - 600 rpm 40X22X8,5 seal ring;
Cod. 033026 - 100 g packet Amplifon TA grease
Cod. 033025 - Seal ring spider wheel gasket;
Cod. 002590 - Bearing 6203-2Z
Cod. 033023 - Complete Str.80 600 rpm drum

800 rpm LB

Cod. 033020 - Spider wheel with 800 rpm seal rings;
Cod. 034397 - 800 rpm drum spider wheel;
Cod. 033019 - 800 rpm 52X35X12 seal ring;
Cod. 033026 - 100 g packet of Amplifon TA grease;
Cod. 033025 - Seal ring spider wheel gaskets;
Cod. 002591 - Bearing 6204 - 2Z.
Cod. 013563 - Bearing 6205 - 2Z
Cod. 034182 - Complete Str. 39 800 rpm drum;
800 rpm AI - AV

Cod. 033020 - Spider wheel with 800 rpm seal ring;
Cod. 034397 - 800 rpm drum spider wheel
Cod. 033019 - 800 rpm 52X35X12 seal ring;
Cod. 033026 - 100 g packet Amplifon TA 100 gr grease;
Cod. 033025 - Seal ring spider wheel gasket;
Cod. 002591 - Bearing 6204 - 2Z.
Cod. 013563 - Bearing 6205 - 2Z
Cod. 033024 - Complete Str.80 800 rpm drum;

When replacing the drum spider wheel remember that you will need the following parts:

3 ME TE 10 X 25 screws Cod. 030679;

3 self-locking nuts M10 Cod. 030680

3 TP 26 X 10.5 X 2 washers Cod. 030681.

When working on the user's premises, the assembled tank spider wheel or the single parts must be used, in the case of the latter, remember that the surface of the bearing housing must not be deformed, otherwise the complete spider wheel must be replaced. When positioning the seal ring on the spider wheel, remember that the printing marked on the ring must be on the outside. In addition, in order to ensure the perfect seal of the ring, remember to spread about 7 g. of the Amplifon TA grease between the contact surface of the bearing and ring as well as in the centre hole of the ring. The above parts are not individually interchangeable with premodification parts.

0106414: USE OF RING SEALS

As an integration to Notices 412 and 413, we advise that a number of parts which have recently gone into production, will replace those indicated in the above notices.

The parts in question are as follows:

Code 033023 replaced by 036456 (spray drum)

Code 033024 replaced by 036389 (spray drum)

Code 036647 replaced by 036583 (drum with tie rods) In addition, we wish to point out that in Notice 412, in the part regarding the 800 rpm AI and AV models, the code AM (Mulinello) was omitted with the relevant drum 036654 (all the other parts with exception of the drum spider wheel code 034397 which can not not be used on the Mulinello, remain unchanged).

0106415: SCREWED-IN BRACKET FOR HEATING ELEMENT

As from serial no. 11216.0001, the heating element bracket is fixed with a screw and is no longer welded on the washing machines and tumble dryers manufactured in the Comunanza factory.

This modification involves the following new parts:

Cod. 037083 - Heating element bracket;

Cod. 037132 - 2 Stainless steel M4 X 12 TMT screw

Cod. 037133 - 2 Vellumoide gaskets

Cod. 037135 - 2 self-locking M 4 nuts

Cod. 037142 - 1 - 4 x 12 x 1 washer The assembly order for the above parts is as follows:

Screw with head outside the tank, Vellumoide washer between the screw head and the tank, bracket inside the stainless steel washer and self-locking nut of the tank.

The bracket must not be loosened when replacing the heating element since it will otherwise not be possible to tighten the screws.

The shape of the new bracket does however make it easy to remove the heating element.

The tanks with screwed bracket have the same code as the premodification part. You will find a packet in the tank with the bracket assembly kit.

All the tanks with welded bracket currently in stock in the Centralized Spare Parts Warehouse will be supplied until stocks last and then gradually replaced by those with the heating element bracket fixed with a screw.

0106419: MODIFIED TIMER CAM

As from serial no. 11112.0001 the Elbi cam code 027210 has been modified on all the washing machines with an ELBI 1088 timer.

The code of the modified cam is 037238. This cam must be used with the black bushing code 031082.

When replacing one of the above parts, one of the following combinations must be used:

Combination I

Code 027210 - Cam

Code 020183 - Bushing Combination II

Code 037238 - Cam (11112)

Code 031082 - Bushing The premodification parts will be supplied until stocks last.

0106421: MODIFIED DOOR HANDLE FOR WASHER AND WASHER-DRYER DOOR

For production reasons, the door handle has been modified on all washers and tumble dryers as from serial no. 11205.0001. The new handle has a different structure and is made of hostaform instead of polycarbonate; the handle is white and not black. This handle can not be used to replace the black handle (code 019690) because it does not fit the inner frame of the door. Technical Servicing Departments must therefore use only the black handle because if necessary, it can be used to replace the white handle.

0106423: USE OF NYLON BOSS TO REDUCE NOISE

In order to reduce the noise level, a nylon washer code 037346 has replaced the counterweight pad code 025208 as from serial no. 20116.0001

on all Quadrifoglio Italy version washers.

The washer must be fitted facing upwards on the screw with tabs and acts as a spacer between the tank and the counterweight.

This solution will subsequently be used on all the models in the different ranges produced in Comunanza.

0106426: WHITE DOOR WITH GLASS

As from April 1992, the plastic door has been replaced with a glass door on all washing machines in the Quadrifoglio range, models LB474LNL - LB878ELNL - LB1495ENL - P44 - P45T - C450 - C450T - LB818XTPT - LB618XTCL - LB414SBE - LB414SPT.

In addition, the colour of the handle and pushbutton has been changed.

The pushbutton has an arrow in relief indicating in which direction to push to open the door.

The codes of the door in the case of models LB414S - LB474LNL - LB878ELNL - LB1495ENL - P44 - P45T - C450 - C450T are as follows:

Code 028304 - glass door

Code 027995 - door handle - white 26

Code 027996 - door pushbutton - white 26

Code 028861 - door frame - white 26

Code 003044 - handle pin

Code 016726 - door frame

Code 003052 - door tooth

Code 015437 - handle pushbutton spring

Code 025256 - handle spring The codes of the glass door in the case of models LB818XTPT - LB618XTCL

- LB414SBE - LB414SPT are as follows:

Code 020765 - door handle - beaver 74

Code 038692 - door pushbutton - C74

Code 033231 - door frame

Code 003044 - handle pin

Code 016726 - door frame

Code 003052 - door tooth

Code 015437 - handle pushbutton spring

Code 025256 - handle spring

Code 028304 - door glass The parts are not individually interchangeable with the premodification parts, but they are interchangeable as a unit.

0106427: NEW STYLE FOR CONTROL PANEL AND DOOR

As from serial no. 20514.0001 the finish of washing machine LB414S in the Quadrifoglio range, has been modified:

The codes of the new parts used are as follows:

Code 028304 - door glass;

Code 027995 - Door handle, white 26;

Code 027996 - Door button, white 26;

Code 028861 - Door frame, white 26;

Code 003044 - Handle pin;

Code 016726 - Door frame;

Code 003052 - Door nib;

Code 015437 - Handle button spring;

Code 025256 - Handle spring;

Code 027999 - Timer knob-cover;

Code 038695 - Programme dial;

Code 028000 - Switch lid;

Code 038694 - Dashboard + handle;

Code 027998 - Timer knob.

0106429: NEW AIR TRAP ON 400-600 RPM UNITS

In order to prevent water from spilling, as a result of old detergents which do not dissolve completely, and which may partially or totally plug the air intake, as from serial no. 20525.0001 the air intake has been modified on all the 400/600 washing machines (excluding the recessed models).

Therefore when you find that the water level is increasing or the water is starting to spill, you should replace the air intake and the drain pump (only if synchronous with asynchronous code 023868).

When carrying out this modification you will also have to shorten the air intake pipe from 450 mm to 370 mm, in the case of code 030388

and from 600 mm to 520 in the case of code 019731.

The new trap has the same SAT code 019730, although the length of the new part is 24.5 cm instead of 18.5, it is however interchangeable with the premodification part.

0106440: USE OF THE ASBESTOS-FREE LINING

As from serial no. 30317.0001 linings without asbestos are used on all the machines produced in the Comunanza factory in order to ensure compliance with new laws and to eliminate the possibility of noise on the appliance with stainless steel tub.

The new dark grey sliding block will have the same code number as the premodification part 003036 and is already available from the

Centralized Spare Parts Warehouse.

Remember that when replacing the sliding block it will be necessary to replace the other three sliding blocks as well in order to ensure mechanical and typologic uniformity.

0106448: MECHANICAL REINFORCEMENT OF 600 RPM MODEL (QUADRIFOGLIO)

As from serial no. 40218.0001 in order to improve the mechanics LB678ST/1 in the spider-wheel/drum shaft area, the following parts have been used on all 600 rpm washers in the Quadrifoglio (Four-leaved Clover) range.

Code 042883 - Drum for O-ring 600 rpm str. 39;

Code 042889 - Spider wheel with O-ring 600 rpm str. 39;

Code 042888 - Driven pulley 600 rpm str. 39;

Code 039671 - Screw M8 x 22;

Code 039670 - Washer 8.5 x 28 x 2.5;

Code 042890 - O-ring;

Code 002590 - Bearing 6203-2Z

Code 002591 - Bearing 6204-2Z;

When making repairs either the spider wheel-tank unit or the single components may be used; in the case of the latter, remember to check that the surface of the bearing housing is not buckled; if so the entire spider wheel must be replaced.

When fitting the O-ring, ensure that the printing on the ring is on the outside.

In addition, in order to ensure a perfect seal, apply approx. 7 g of Ampligon TA grease on the surface between the bearing and the ring and in the hole at the centre of the ring.

The above mentioned parts are not individually interchangeable with the premodification parts.

0106449: MECHANICAL REINFORCEMENT FOR 800 RPM QUADRIF.

As from serial no. 40303.0001 in order to improve the mechanics in the spider-wheel/drum shaft area, the following parts have been used on all 800 rpm washers in the Quadrifoglio (Four-leaved Clover) range.

Code 039666 - Drum for O-ring 1000 rpm with holes;

Code 039668 - Spider wheel with O-ring 1000 rpm str. 39;

Code 039669 - Driven pulley 1000 rpm str. 39;

Code 039671 - Screw M8 x 22;

Code 039670 - Washer 8.5 x 28 x 2.5;

Code 039667 - O-ring 1000 rpm;

Code 013563 - Bearing 6205-2Z

Code 002591 - Bearing 6204-2Z;

When making repairs either the spider wheel-tank unit or the single components may be used; in the case of the latter, remember to check that the surface of the bearing housing is not buckled; if so the entire spider wheel must be replaced.

When fitting the O-ring, ensure that the printing on the ring is external.

In addition, in order to ensure a perfect seal, apply approx. 7 g of Ampligon TA grease on the surface between the bearing and the

ring and in the hole at the centre of the ring.

The above mentioned parts are not individually interchangeable with the premodification parts.

0106454: STYLE CHANGED FROM CASTORO TO WHITE 26

As from serial no. 40429.0001 the finish on Washer model LB618XTPT has been changed from beaver to white26.

The codes of the new parts are as follows:

Code 043277 - Dashboard + Handle white 26;

Code 027998 - Timer knob white 26;

Code 027999 - Timer cap white 26;

Code 028000 - Switch cover white 26;

Code 028004 - Temperature control white 26;

Code 038370 - Program disk white 26;

Code 027997 - Door white 26.

0106457: HEATING ELEMENT WITH FUSE

As from serial no. 40506.0001, the heating element with 1950W/220V thermofuse code 033055 is mounted on Washer model LB474LNL.

This has required the use of the new part, Wiring code 043534.

0106464: NEW EAS 9213 AND 9061.02 CAMS

In order to standardise the cam stop bushing as from serial no.

40615.0001, the two new cams Code 043849 and Code 043850 are used on on the washing machines in the Four Clover range equipped with distribution cam for the Timer Eaton 9061.02 and as from serial no. 40623.0001 on those using the cam for the Eaton EAS 9213.

The new cams are not individually interchangeable with premodification unless equipped with bushing code 031082.

Cams 020274 and code 020184 will be supplied until stocks last; the cams complete with relevant bushings may be used instead of the new cams.

0106474: MECHANICAL REINFORCEMENT FOR 400-RPM (QUADRIFOGLIO)

As from serial no. 41024.0001 the following parts have been used on all 400 rpm washers in the Quadrifoglio range in order to improve the mechanics in the spider-wheel/drum shaft area:

Code 042883 - 600 rpm str.39 spider-wheel drum with O ring;

Code 042889 - 600 rpm str.39 spider wheel with O ring;

Code 042888 - 600 rpm str.39 pipe pulley;

Code 039671 - M8 X 22 screw;

Code 039670 - 8,5 X 28 X 2,5 washer;

Code 042890 - O ring.

Code 002590 - Bearing 6203-2Z;

Code 002591 - Bearing 6204-2Z;

When carrying out repairs, either the assembled tub spider-wheel unit or the single parts may be used; in the case of the latter, remember to ensure that the bearing housing is not warped; if so, replace the entire spider-wheel.

When fitting the O-ring on the spider-wheel, ensure that the working printed on the ring remain outside.

In order to ensure the perfect seal of the ring, it is essential to rub about 7 g of Ampligon grease TA on the surfaces between the bearing and the ring and in the centre hole of the ring.

The above parts are not individually interchangeable with the premodification parts.

0106486: NEW DISPENSER ASSEMBLY FOR AV-AI-LB-AS MODELS

As from serial no. 50522.0001 the detergent dispenser lid, dispenser body, drawer and additive lid were modified in order to improve detergent filling on all washer and washer dryers in the "Margherita AI-AV", "Snella", "Quadrifoglio LB" range with exception of the special models manufactured for the German and English markets:

The codes of the modified parts are as follows:

Code 047276 - DE dispenser lid;

Code 046621 - dispenser body;

Code 046423 - dispenser drawer;

Code 046424 - Additive lid;

The new parts are not individually interchangeable with the premodification parts (that will continue to be supplied) but are interchangeable if used as a whole.

0106552:

Beginning with serial no. 80825.0001 on the Dialogic washing machines and washer dryers, AB, AL and AB..C, AL..C, the rear cover, outlet hose, terminal block and cushion frame cabinet have been changed.

The items subjected to new modification are:-

Dialogic:

Cod. 049515 Rear cover;

Cod. 051738 Outlet hose;

Cod. 041163 Terminal block.

Washing machines and washer dryers AL / AB AL..C / AB..C

Cod. 049515 Rear cover;

Cod. 051738 Outlet hose;

Cod. 041163 Terminal block.

The modified cabinets keep the same SAT codes as the pre-modification ones, and in order to maintain the same interchangeability, they are handled assembled with rear panel and terminal block.

This modification also applies to cabinets which are no longer produced but still handled as spares. Therefore, in cases where the cabinet is modified, it is necessary to use rear cover cod. 049515 and terminal block cod. 041163.

